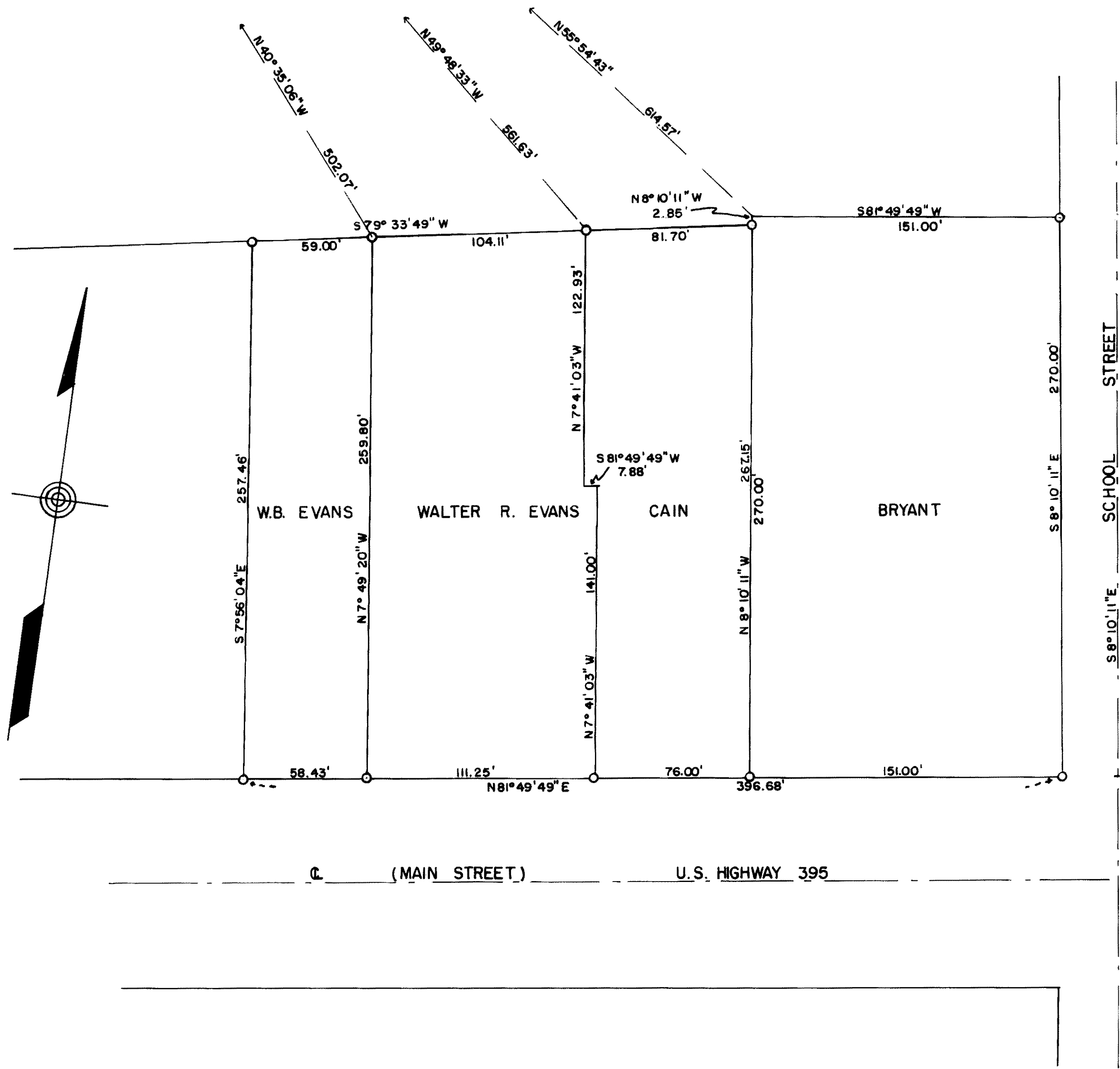


TO NW COR. SEC. 33, T. 5N, R. 25E., M.D. 8&M.



BASIS OF BEARING

THE BEARING OF N 8° 10' 11" W, FOR THE CENTERLINE OF SCHOOL STREET IS THE BASIS OF THE BEARINGS OF THIS SURVEY.

SURVEYOR'S CERTIFICATE

THIS MAP CORRECTLY REPRESENTS A SURVEY MADE BY ME IN CONFORMANCE WITH THE REQUIREMENTS OF THE LAND SURVEYOR'S ACT ON AUGUST 6 & 7, AND SEPTEMBER 17, 1968, AT THE REQUEST OF EVANS, CAIN AND BRYANT.

*Walter G. Reid*  
WALTER G. REID R.C.E. 7522  
VIRGINIA CITY, NEVADA

PLANNING COMMISSION'S CERTIFICATE

THIS IS TO CERTIFY THAT THIS PARCEL MAP IS IN ACCORD WITH THE APPROVED TENTATIVE MAP OF THE PARCELS.

MONO COUNTY PLANNING COMMISSION

BY \_\_\_\_\_

COUNTY SURVEYOR'S CERTIFICATE

THIS MAP HAS BEEN EXAMINED FOR CONFORMANCE WITH THE REQUIREMENTS OF THE LAND SURVEYOR'S ACT THIS \_\_\_\_\_ DAY OF \_\_\_\_\_, 1968.

COUNTY SURVEYOR \_\_\_\_\_

RECORDER'S CERTIFICATE

FILED FOR RECORD THIS 15<sup>th</sup> DAY OF January, 1968, AT 4:05 P.M., IN BOOK 6 OF Maps ON PAGE 22, AT THE REQUEST OF \_\_\_\_\_

COUNTY RECORDER \_\_\_\_\_

RECORD OF SURVEY MAP  
PROPERTY OF W. R. EVANS,  
W. B. EVANS, CAIN AND BRYANT  
A PORTION OF BLOCK 1,  
BRIDGEPORT, MONO COUNTY, CALIF.

SCALE - 1" = 40'