

CORNER RECORD

COUNTY OF ~~NYO~~ MONO T. 3N R. 25E M.D.B. MERIDIAN CALIFORNIA
 CORNER TYPE: GOV'T. CORNER ☐ MEANDER ☐ RANCHO ☐ CONTROL ☐ OTHER ☒
 CORNER IDENTIFICATION - DATE OF VISIT Nov. 15 1988

SEC.
2

Reference Cal Trans R/W Record Map:
 MNO 23-I, sheet 14 of 22, March 1936

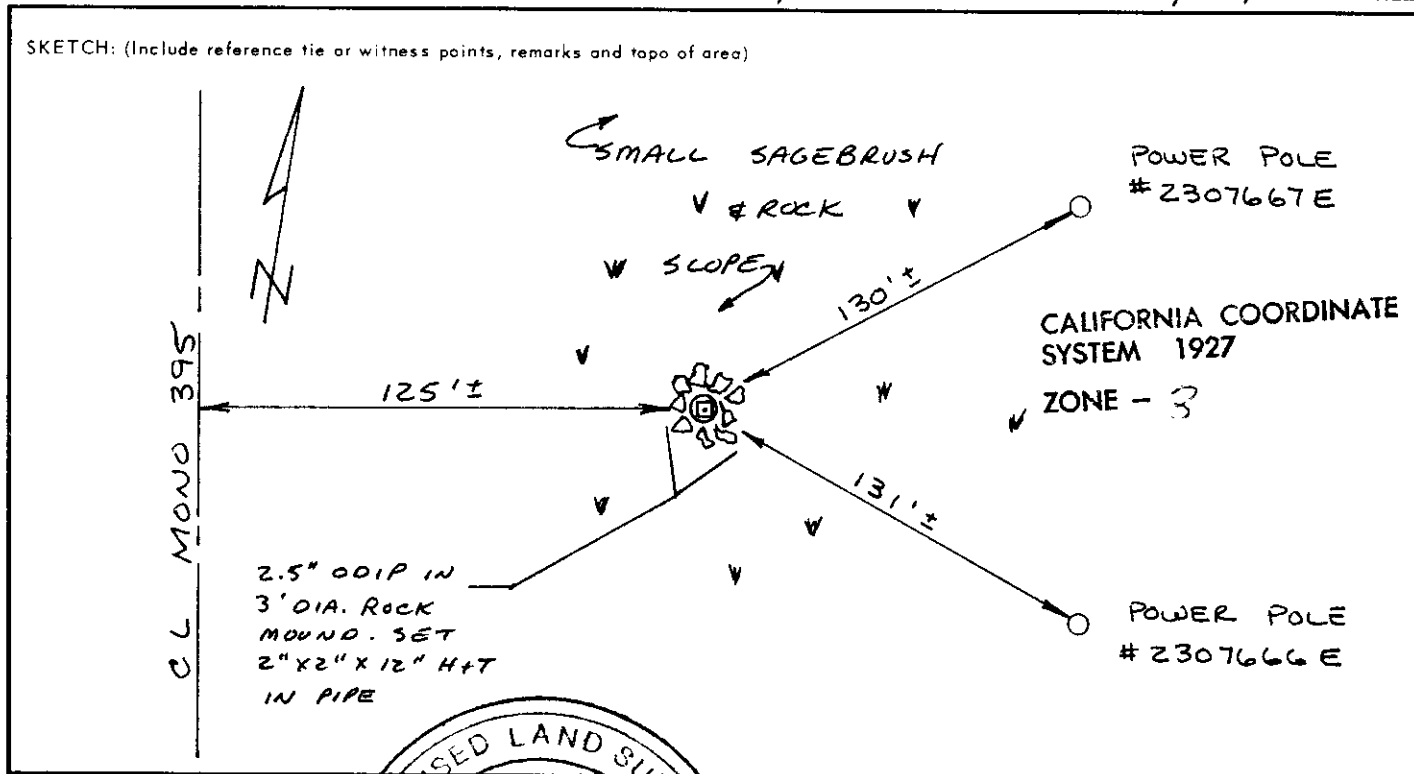
CORNER - LEFT AS FOUND ☐ FOUND AND TAGGED ☐ REESTABLISHED OBLITERATED CORNER ☐ REBUILT ☒

PHYSICAL DESCRIPTION OF CORNER FOUND: EVIDENCE AND METHOD USED TO IDENTIFY OR REESTABLISH FOUND 2.5"
ODIP IN 3' DIA. ROCK MOUND, 1.0' ± HIGH, 125' ± E. OF CL MONO 395 AT
PM 68.36 ±, 130' ± SW OF POWER POLE # 2307667E & 131' ± NW OF POWER
POLE # 2307666E. LOCATED ON GENTLE SLOPE WITH SMALL SAGE BRUSH
& SMALL ROCKS. SET 2" X 2" X 12" HUB & TACK IN CENTER OF 2.5" ODIP.

PHYSICAL DESCRIPTION OF MONUMENTS REBUILT OR PERPETUATED PHOTO INFO - ROLL # 098700/-1
~~EXP. #1 - FACING NORTH - LOOKING DOWN~~
 EXP. #2 - FACING NORTH
 EXP. #3 - FACING SOUTH
 EXP. #4 - FACING WEST

CALIFORNIA COORDINATE SYSTEM ORDER: FIRST ☐ SECOND ☐ THIRD ☒
 STATIONS USED: NGS (USC & GS) ☒ STATE ☐ COUNTY ☐ OTHER ☐ STATION CONWAY STATION BM F-123
 ZONE 3 ELEVATION _____ NORTHINGS (Y) 605,430.4 ± EASTINGS (X) 2,378,014.5 ±

SKETCH: (Include reference tie or witness points, remarks and topo of area)



SURVEYOR'S CERTIFICATE

THIS CORNER RECORD WAS PREPARED BY JOHN C. MEYER UNDER MY
 DIRECTION IN CONFORMANCE WITH THE LAND SURVEYORS ACT
 ON 3/8/90 1990 NO. 4468

SIGNED: _____

L.S. or R.C.E. No.: _____

COUNTY SURVEYOR'S CERTIFICATE

THIS CORNER RECORD WAS RECEIVED 3-12 1990
 AND EXAMINED AND FILED 5-4 1990

BY: _____

TITLE: MONO COUNTY SURVEYOR

DOCUMENT No. 31125-2-1

STATEMENT ON BACK OF SHEET

YES ☐ NO ☒