

How to do change the IP address

1. Our IP camera's factory IP address is 192.186.1.123. Please connect IP camera to Router by cat5 cable.



Connection diagram

2. You need install the UC software in you PC. And then open UC software.



3. Login in.

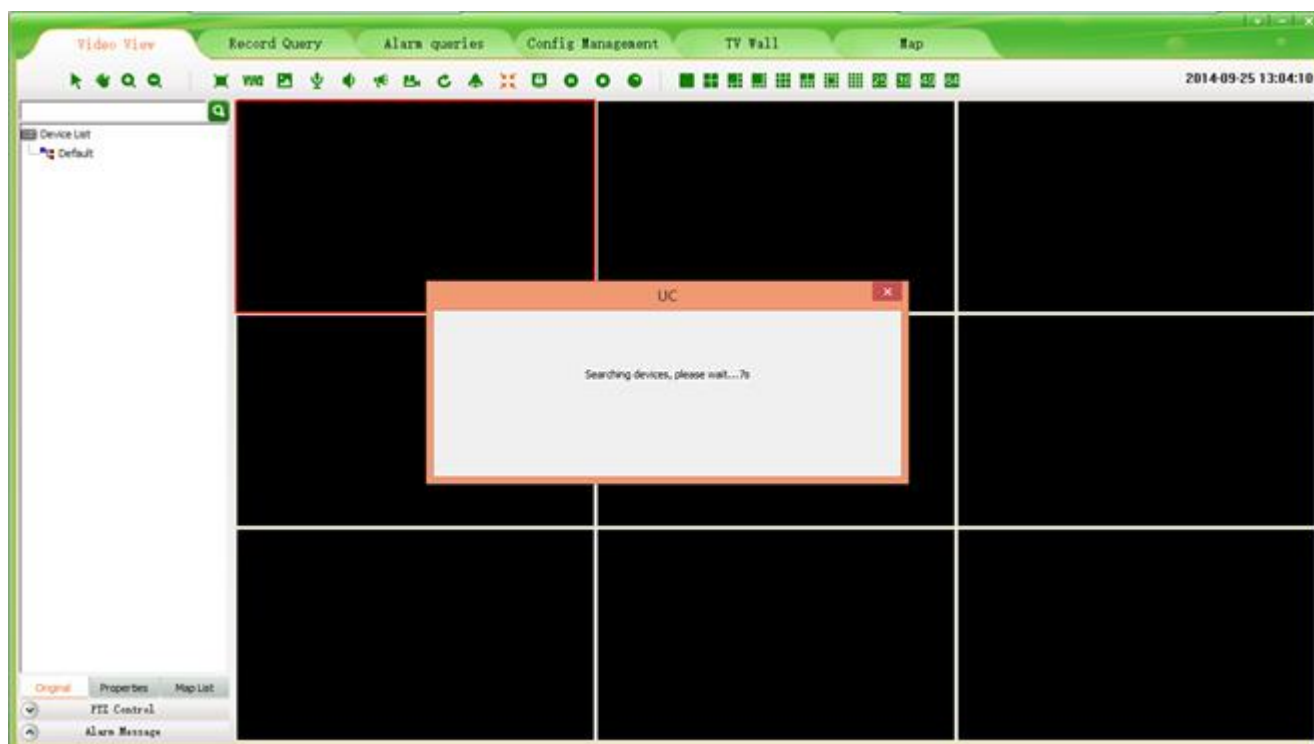
Username: **admin**

Password: **123456**

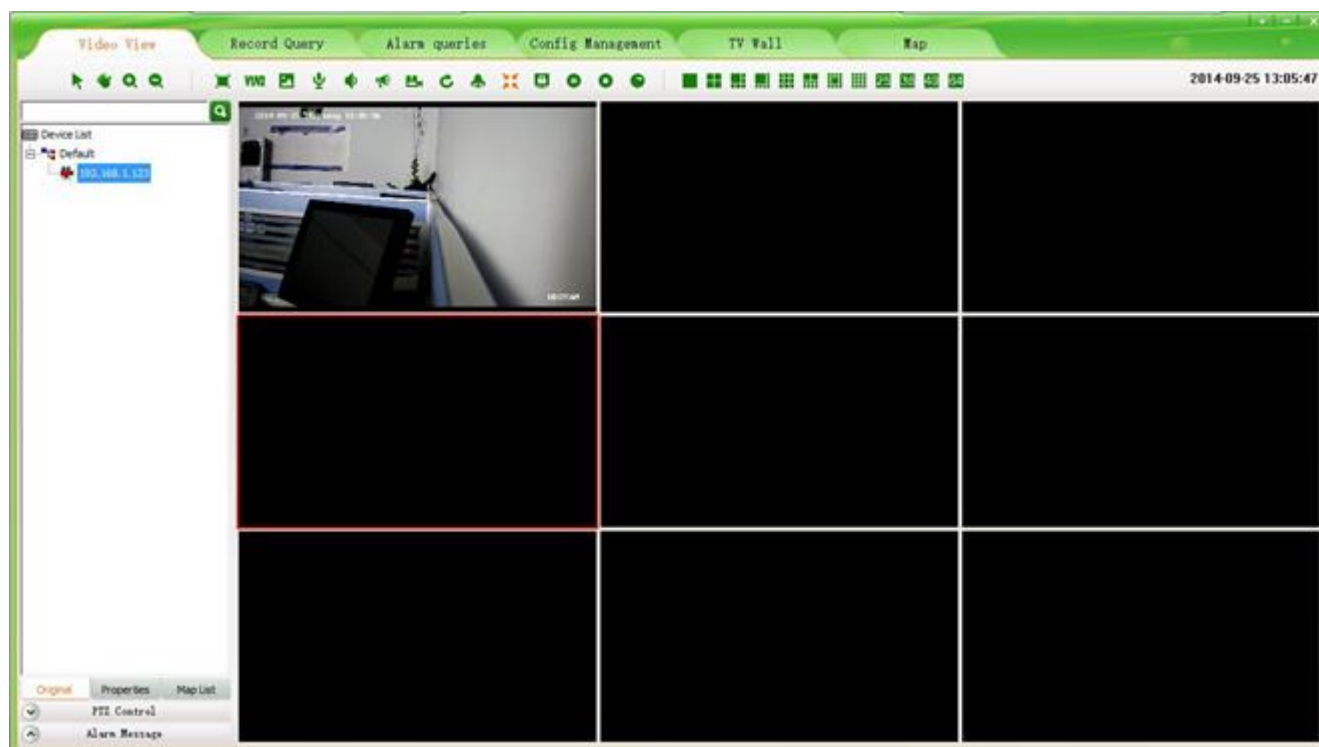
The image shows the login window for the UC2 Video Surveillance Client. The window has a green border and a title bar. It contains the following fields and options:

- Username:** A text box with 'admin' entered.
- Password:** A text box with masked characters (asterisks).
- Server:** An empty text box.
- Automatic Login:** An unchecked checkbox.
- Save Password:** A checked checkbox.
- Sign Platform:** An unchecked checkbox.
- Login:** A button.
- Cancel:** A button.

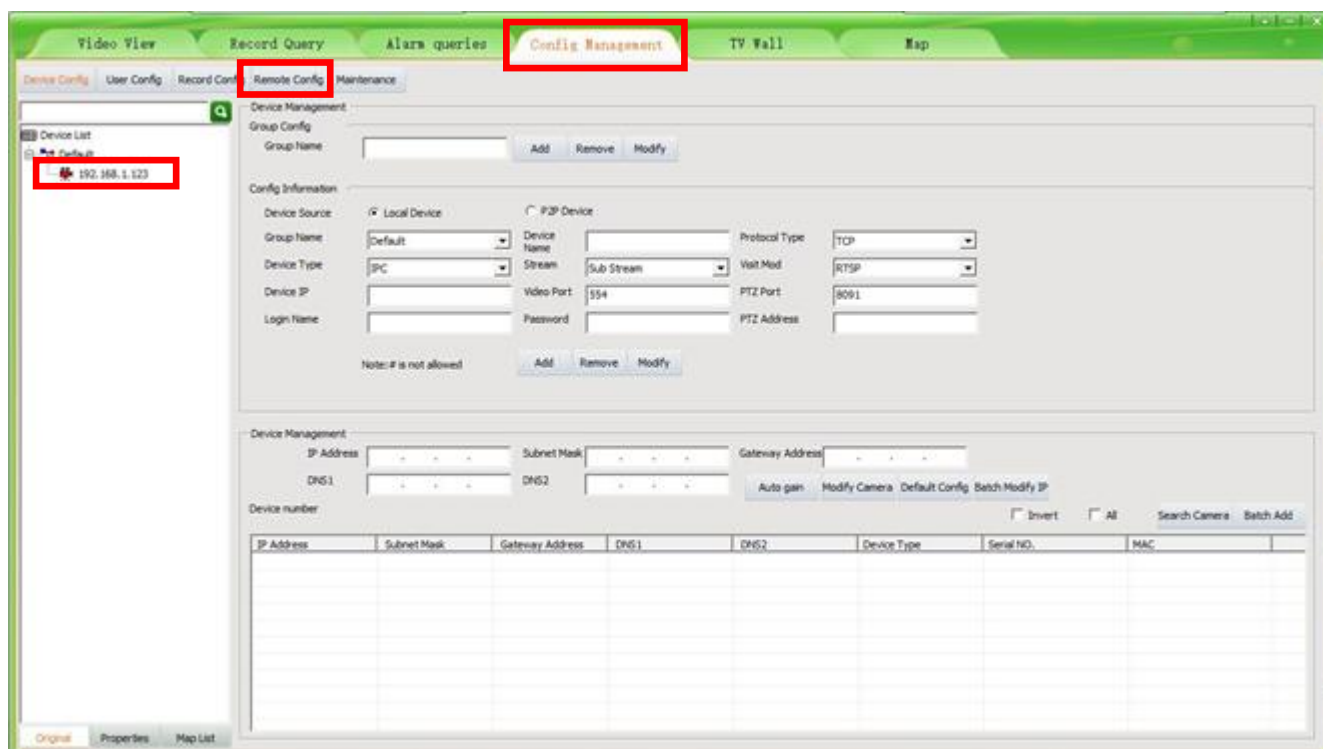
4. Login successful, UC will automatically add the IP camera. Please waiting later, Please waiting later.



5. IP Camera auto add successful.



6. Click: Config Management ---Remote Config---IP address(192.168.1.123)



7. Click: "Network"---"Ethernet Setup", you can see the IP address, the factory IP address is 192.186.1.123.

You can change the IP address and then click "Save"

