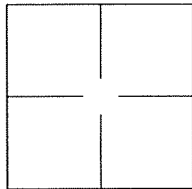


CORNER RECORD

Agency Index BK 140 PG 14Document Number CR 14623City of UNINCORPORATED AREACounty of ALAMEDA, CaliforniaBrief Legal Description ALAMEDA COUNTY MONUMENT KL11F6 AND JK98E5

CORNER TYPE

Government Corner ☐ Control ☐
Meander ☐ Property ☐
Rancho ☐ Other ☒

Date of Survey 2020-08-03

COORDINATES (Optional)

N. _____ E. _____

Elevation _____

Units Metric ☐ U.S. Survey Foot ☐

Horizontal Datum _____

Zone _____ Epoch Date _____

Vertical Datum: _____

☐ Complies with Public Resources Code §§8801-8819☐ Complies with Public Resources Code §§8890-8902PLS Act Ref.: ☐ 8765(d) ☒ 8771 ☐ 8773

Other: _____

Corner/ Monument: ☒ Left as found ☐ Established ☐ Rebuilt ☒ Pre-Construction
☐ Found and tagged ☐ Reestablished ☒ Referenced ☐ Post-Construction

Narrative of corner identified and monument as found and set or reset:

☒ See sheet #2 for description(s):ALAMEDA COUNTY MONUMENT KL11F6 AND JK98E5

SURVEYOR'S STATEMENT

This Corner Record was prepared by me or under my direction in conformance with
the Professional Land Surveyor's Act on 30 November, 2020.

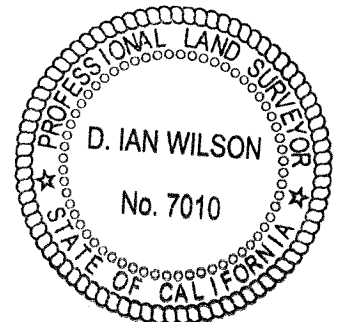
Signed [Signature] P.L.S. or R.C.E. No.: 8040

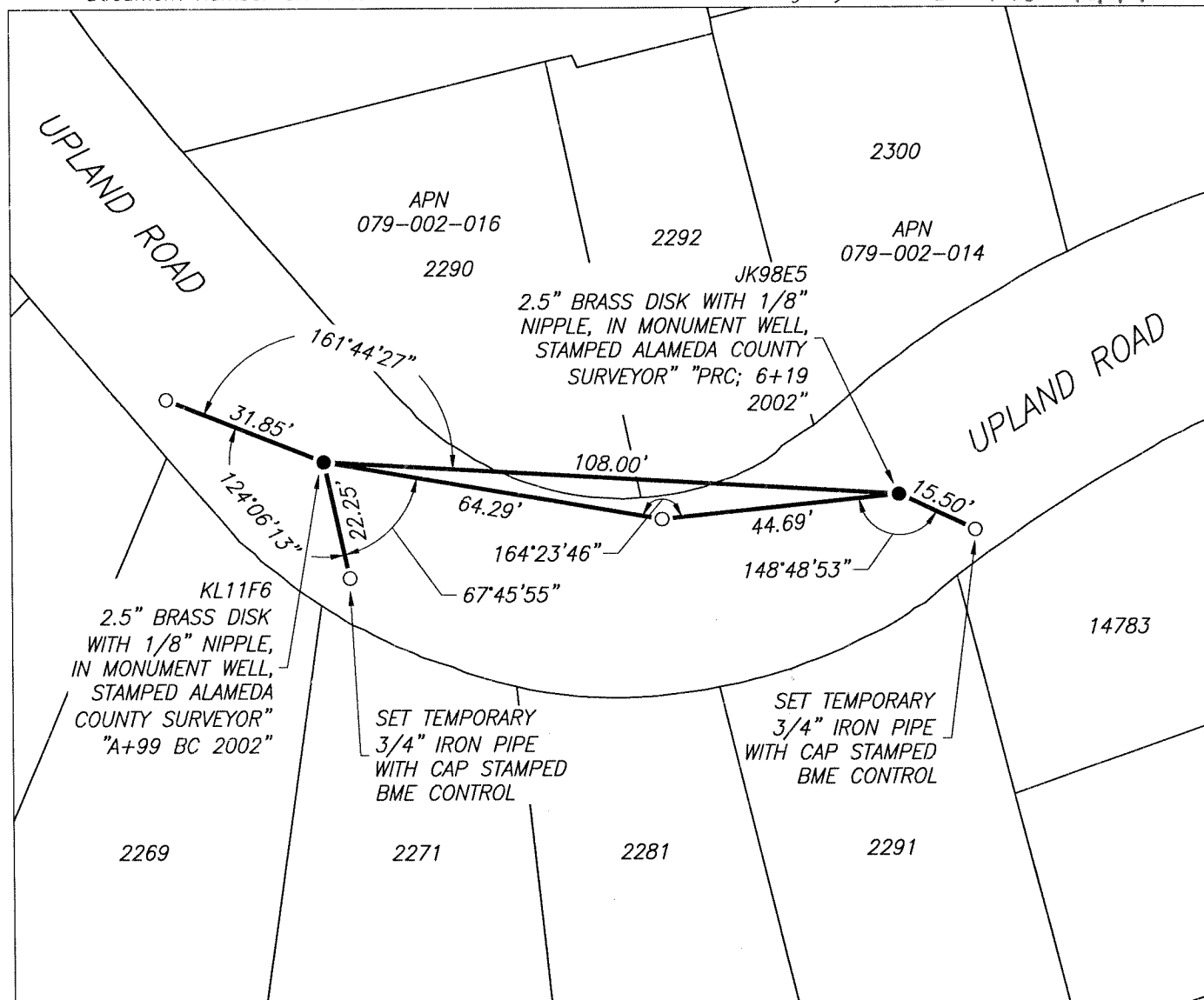
COUNTY SURVEYOR'S STATEMENT

This Corner Record was received _____, _____ and examined
and filed AUG 14 2021.

Signed D. Ian Wilson P.L.S. or R.C.E. No.: 7010Title ALAMEDA COUNTY SURVEYOR

County Surveyor's Comment _____





LEGEND

- FOUND MONUMENT AS NOTED, PER (A)
- SET MAG NAIL IN ASPHALT
- 2292 REFERENCE STREET ADDRESS
- APN ASSESSORS PARCEL NUMBER

REFERENCES

- (A) CORNER RECORD 3405, FILED FOR RECORD ON MARCH 25, 2010, IN BOOK 36 OF CORNER RECORDS, AT PAGE 71, ALAMEDA COUNTY RECORDS

SCALE 1" = 30'