

CORNER RECORD

Agency Index

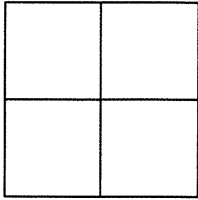
BK 99 PG 49

Document Number

CR 10311City of EDEN TOWNSHIPCounty of ALAMEDA, CaliforniaBrief Legal Description BRASS DISK MONUMENT LOCATED WITHIN THE CUL-DE-SAC OF
SOUTH GOLD RIDGE DRIVE

CORNER TYPE

COORDINATES (Optional)



Government Corner ☐ Control ☒
Meander ☐ Property ☐
Rancho ☐ Other ☐

N. 2076062± E. 6118242±

Elevation _____

Units Metric ☐ U.S. Survey Foot ☐

Horizontal Datum _____

Zone _____ Epoch Date _____

Vertical Datum _____

☐ Complies with Public Resources Code §§8801-8819☐ Complies with Public Resources Code §§8890-8902Date of Survey 6/6/17PLS Act Ref: ☐ 8765(d) ☒ 8771 ☐ 8773 ☐ Other: _____

Corner/
Monument: ☒ Left as found ☐ Established ☐ Rebuilt ☐ Pre-Construction
☐ Found and tagged ☐ Reestablished ☐ Referenced ☒ Post-Construction

Narrative of corner identified and monument as found, set, reset, replaced, or removed:

☐ See sheet #2 for description(s) : SEE CR 9507

FOUND BRASS DISK WITH PUNCH IN MONUMENT WELL.

FOUND AND SET POINTS AS SHOWN ON PAGE 2.

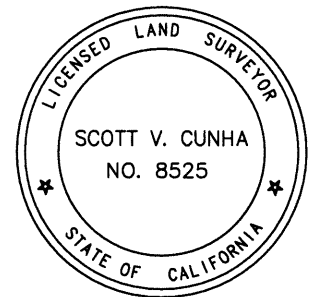
THIS POINT WAS FOUND IN GOOD CONDITION AFTER A CONSTRUCTION PROJECT IN THE VICINITY.
THE TIES SHOWN HEREON ARE FOR THE PURPOSE OF PERPETUATING FOUND MONUMENTATION.
NO CLAIM IS MADE AS TO THE RELATIONSHIP OF THE POINTS OR LINES SHOWN HEREON TO TRUE
BOUNDARY LOCATION.

SURVEYOR'S STATEMENT

This Corner Record was prepared by me or under my direction in conformance with

the Professional Land Surveyors' Act on JUNE 16, 2017.Signed Scott V. Cunha P.L.S. or R.C.E. No. LS 8525

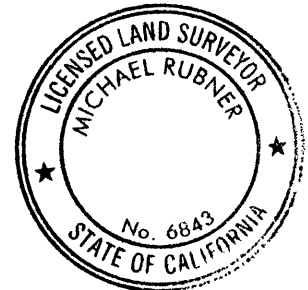
SCOTT V. CUNHA



COUNTY SURVEYOR'S STATEMENT

This Corner Record was received 20 JULY, 2017and examined and filed 18 AUGUST, 2017.Signed Michael Rubner P.L.S. or R.C.E. No. 6843Title COUNTY SURVEYOR

County Surveyor's Comment



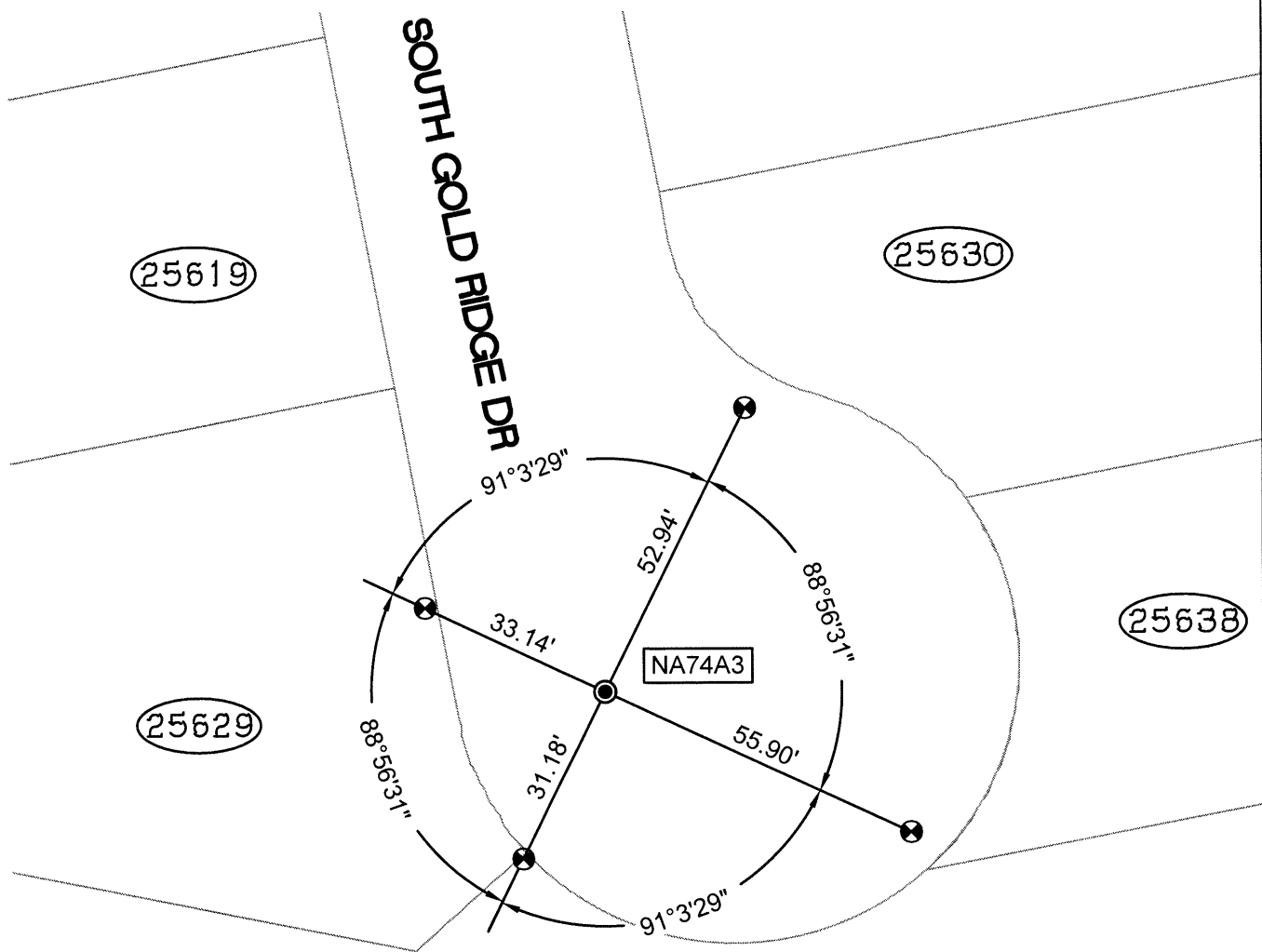
SPEC-2315-POST

SCALE: 1"=30'

LEGEND

- FOUND BRASS DISK WITH PUNCH IN MONUMENT WELL
- ⊗ FOUND CUT CROSS IN WALK
- ✕ FOUND CUT CROSS IN CURB
- ✕ FOUND MAG AND SHINER
- FOUND REBAR & CAP STAMPED "CEI RP"
- AA### ALAMEDA COUNTY MONUMENT ID

19592 REFERENCE STREET ADDRESS



216178-GOLD-CR16 post