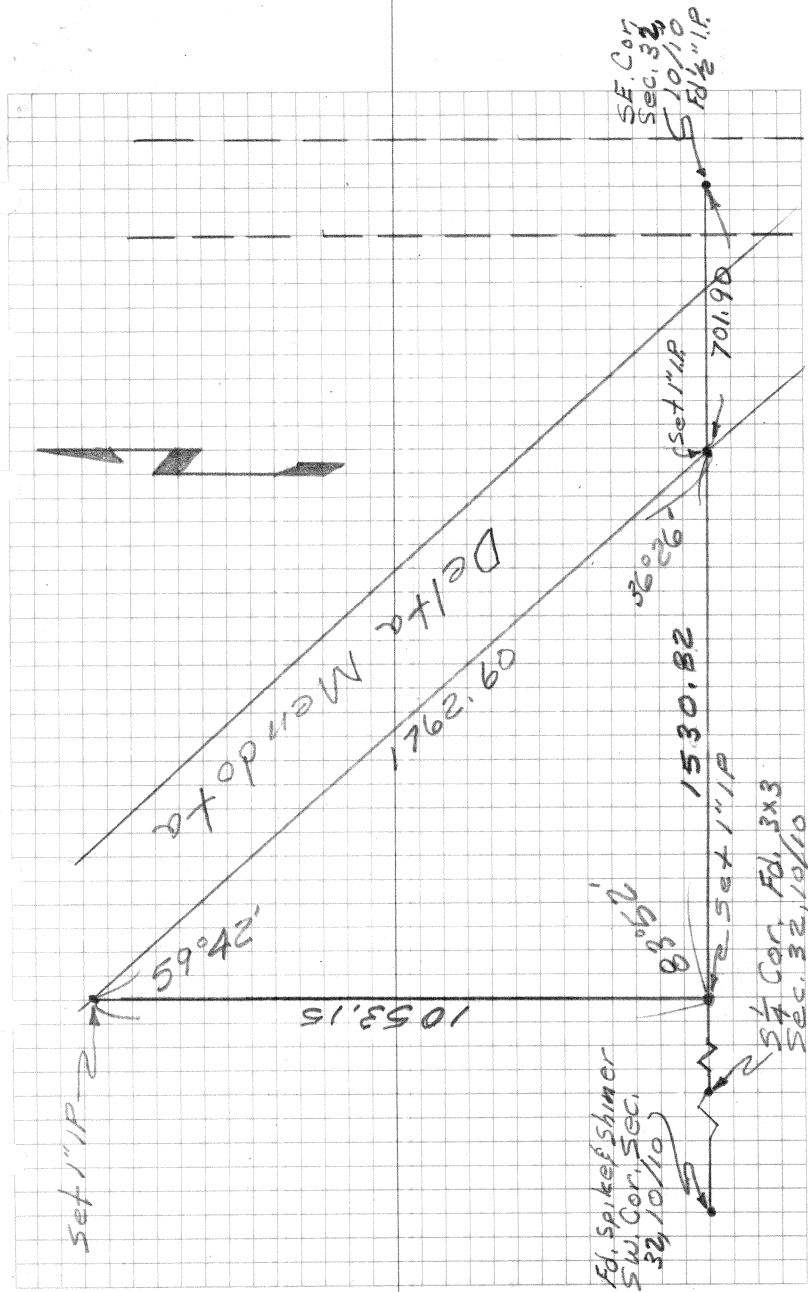


Prop. Survey  
in  
Sec. 32, 10/10  
for  
Manuel Affonso

5-1-63

Graves  
Lagutta  
James

 $145 - 81$ 

# SURVEYOR'S CERTIFICATE

THIS MAP CORRECTLY REPRESENTS A SURVEY  
MADE BY ME OR UNDER MY DIRECTION IN  
CONFORMANCE WITH THE REQUIREMENTS OF  
CHAPTER 15 OF DIVISION 3 OF THE BUSINESS  
AND PROFESSIONS CODE AT THE REQUEST OF  
MANUEL AFFONSO

Manuel S. Huddleston  
S.S. No 2402

# COUNTY SURVEYOR'S CERTIFICATE

THIS MAP HAS BEEN EXAMINED FOR CONFOR-  
MANCE WITH THE REQUIREMENTS OF CHAPTER 15  
OF DIVISION 3 OF THE BUSINESS AND PROFESSIONS  
CODE THIS \_\_\_\_ DAY OF \_\_\_\_, 1963.

MERCED COUNTY SURVEYOR  
R.C.E. No 12260

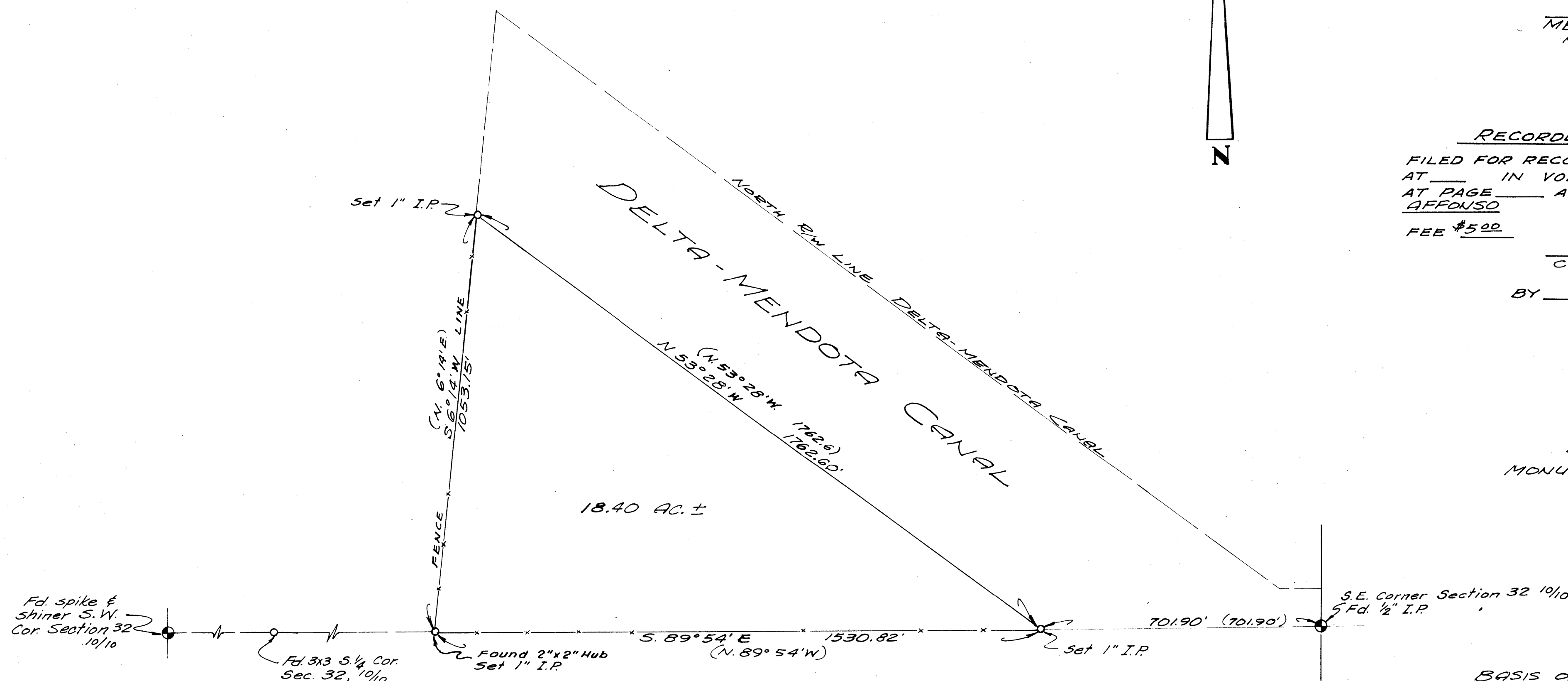
# RECORDER'S CERTIFICATE

FILED FOR RECORD THIS \_\_\_\_ DAY OF \_\_\_\_  
AT \_\_\_\_ IN VOLUME \_\_\_\_ OF SURVEYS \_\_\_\_  
AT PAGE \_\_\_\_ AT THE REQUEST OF MANUEL  
AFFONSO  
FEE \$5.00

COUNTY RECORDER

BY \_\_\_\_\_, DEPUTY

LEGEND  
MONUMENTS AS LISTED



BASIS OF BEARING SOUTH LINE SECTION 32  
N. 89° 54' 00" E. U.S.B.R. DATUM

MILLER & LUX INCORPORATED  
ENGINEERING DEPARTMENT  
LOS BANOS, CALIFORNIA

## RECORD OF SURVEY

PROPERTY OF  
MANUEL AFFONSO

BEING A PORTION OF  
SECTION 32, T.10S. R.10E. M.D.B. & M.

145 JOB 81 SCALE 1"=200'

VOL. 4, PAGE