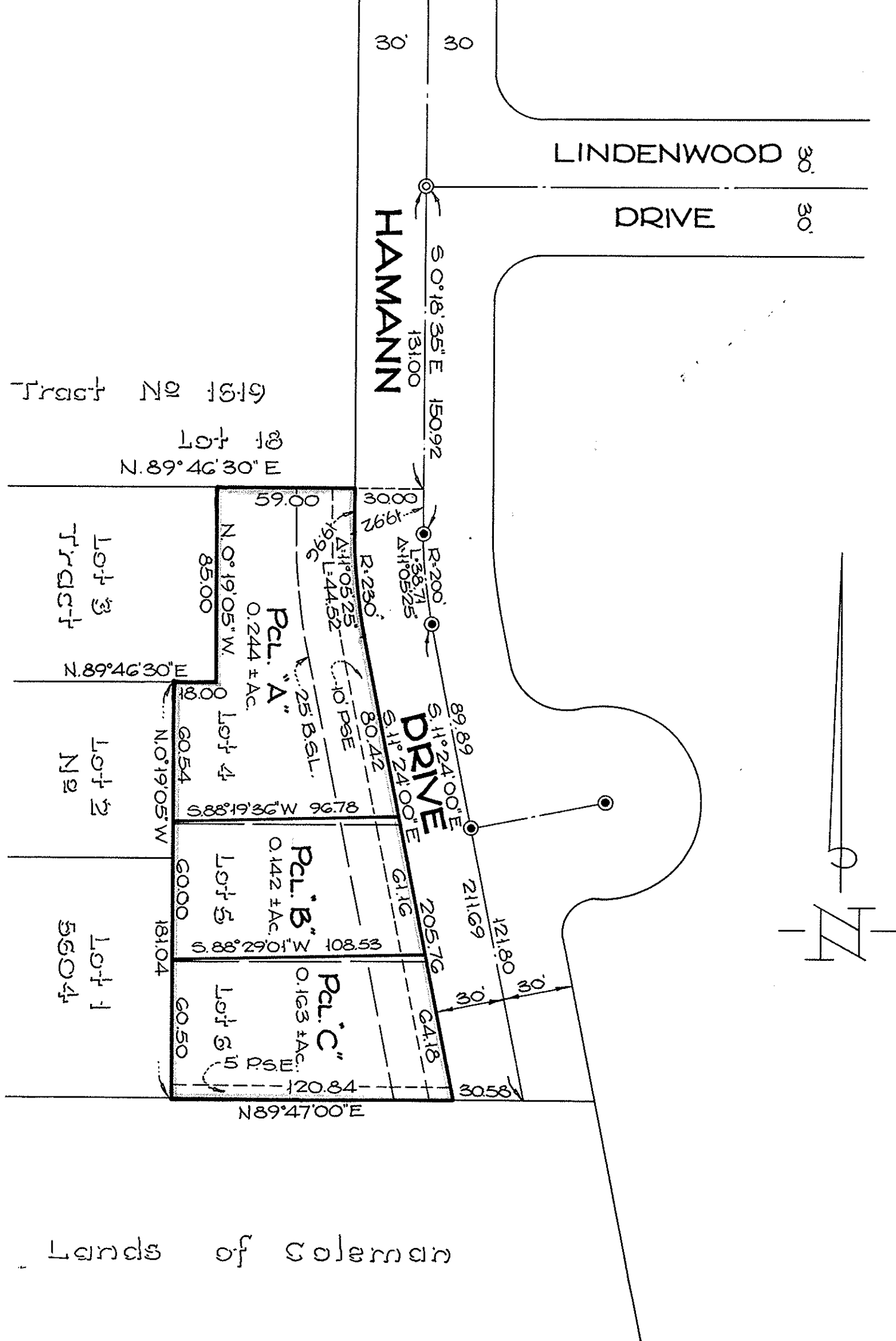


PARCEL MAP

CONSISTING OF ONE SHEET
BEING A PORTION OF TRACT N^o 5604 - BOOK 347 MAPS, PAGE 35 & 36
AND LYING WITHIN THE CITY OF
SAN JOSE, CALIFORNIA
Scale: 1" = 50'
November 1974

MARK THOMAS & Co. INC.
Consulting Civil Engineers & Municipal Planners
San Jose
California



ENGINEER'S CERTIFICATE

This map was prepared by me or under my direction and is compiled from record data and is based upon a field survey in conformance with the requirements of the Subdivision Map Act at the request of Hogue Construction Co. in November 1974. I hereby certify that it conforms to the approved tentative map and the conditions of approval thereof, that all provisions of applicable state law and local ordinances have been complied with.

Sam J. Zullo
Sam J. Zullo R.C.E. 14392

CITY ENGINEER'S CERTIFICATE

This map has been examined this 10th day of December, 1974, for conformance with the requirements of Section 11575 of the Subdivision Map Act.

by A. R. Turturici, Deputy
A. R. Turturici R.C.E. 10081
City Engineer, City of San Jose

RECORDER'S CERTIFICATE

Filed this 11th day of December, 1974, at 2:21 P.M. in Book 347 of Maps of page 36 at the request of Mark Thomas & Co. Inc.
File No. 49109710
George A. Mann, County Recorder
Fee 5⁰⁰ Paid

By Law Demand
Deputy

BASIS OF BEARINGS & NOTES

The bearing (S 11° 24' 00" E) along the centerline of Hamann Drive as shown on the map of Tract N^o 5604, filed for record in Book 347 of Maps of pages 35 & 36, Santa Clara County Records, was taken as the basis of bearings shown on this map.
● Indicates Standard City Monument found
● Indicates Standard City Monument to be set per Tract N^o 5604
P.S.E. Indicates Public Service Easement
B.S.L. Indicates Building Setback Line
Chisel "x" in top of curb of each prolonged lot line.
All distances and dimensions are given in feet and decimals thereof.