



St. Thomas

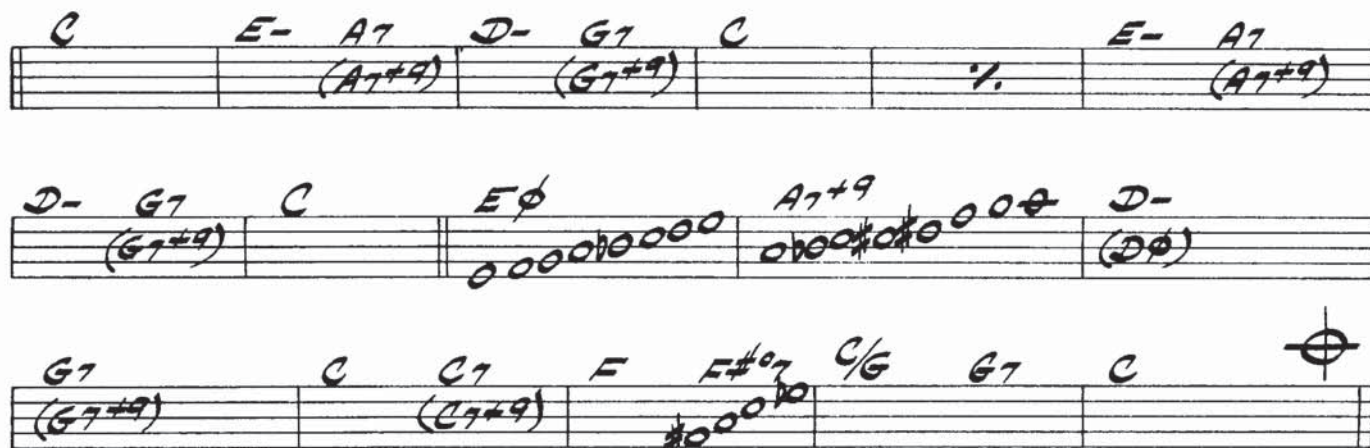
by SONNY ROLLINS

16 CHORUSES

PLAY 8th AND QUARTER NOTES SHORT (DETACHED)



SOLOS



PLAY CODA ONLY AFTER LAST CHORUS

NOTE: On major chords, the Major 7th is not emphasized in the piano voicings. The sound Dan uses is a 6/9 sound, which leaves the Major 7th out. You can play the Major 7th on solos and it will sound fine. A C Major Pentatonic scale could be used throughout the entire song: C D E G A C

