

# How the build e440

Use thick, sturdy paper

First cut along the outlines with a sharp knife.

Dotted lines are folding lines, incise. Do not cut through the paper.

First fold all parts, then glue.

Areas marked as 'g' are mating surfaces.

Assemble all parts seperately before constructing the model.

Cut away excess paper if necessary.

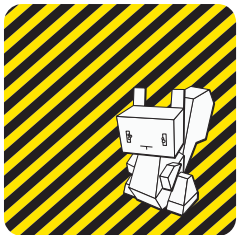
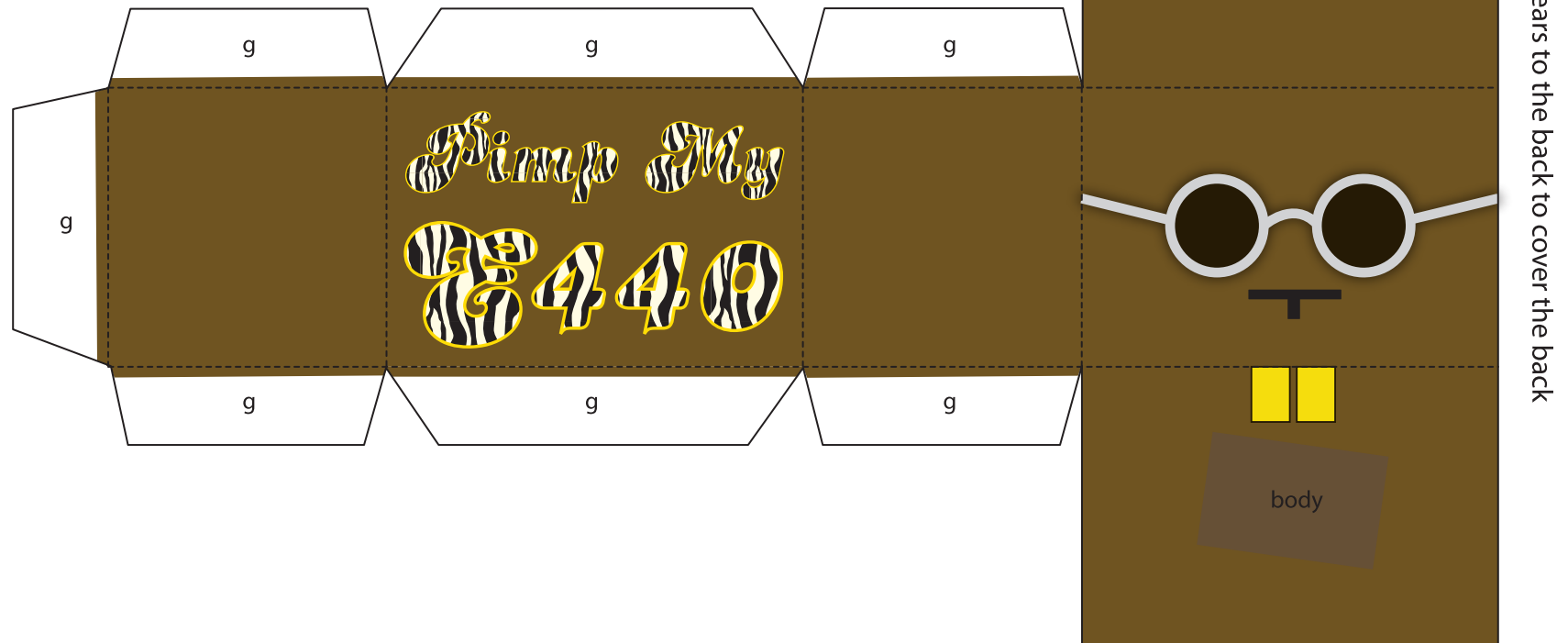
First connect the tail the the body, then the head to the body, then the legs.

Read, Look and think before you cut and glue!

Feed me back your suggestions, questions, etc.

Have fun

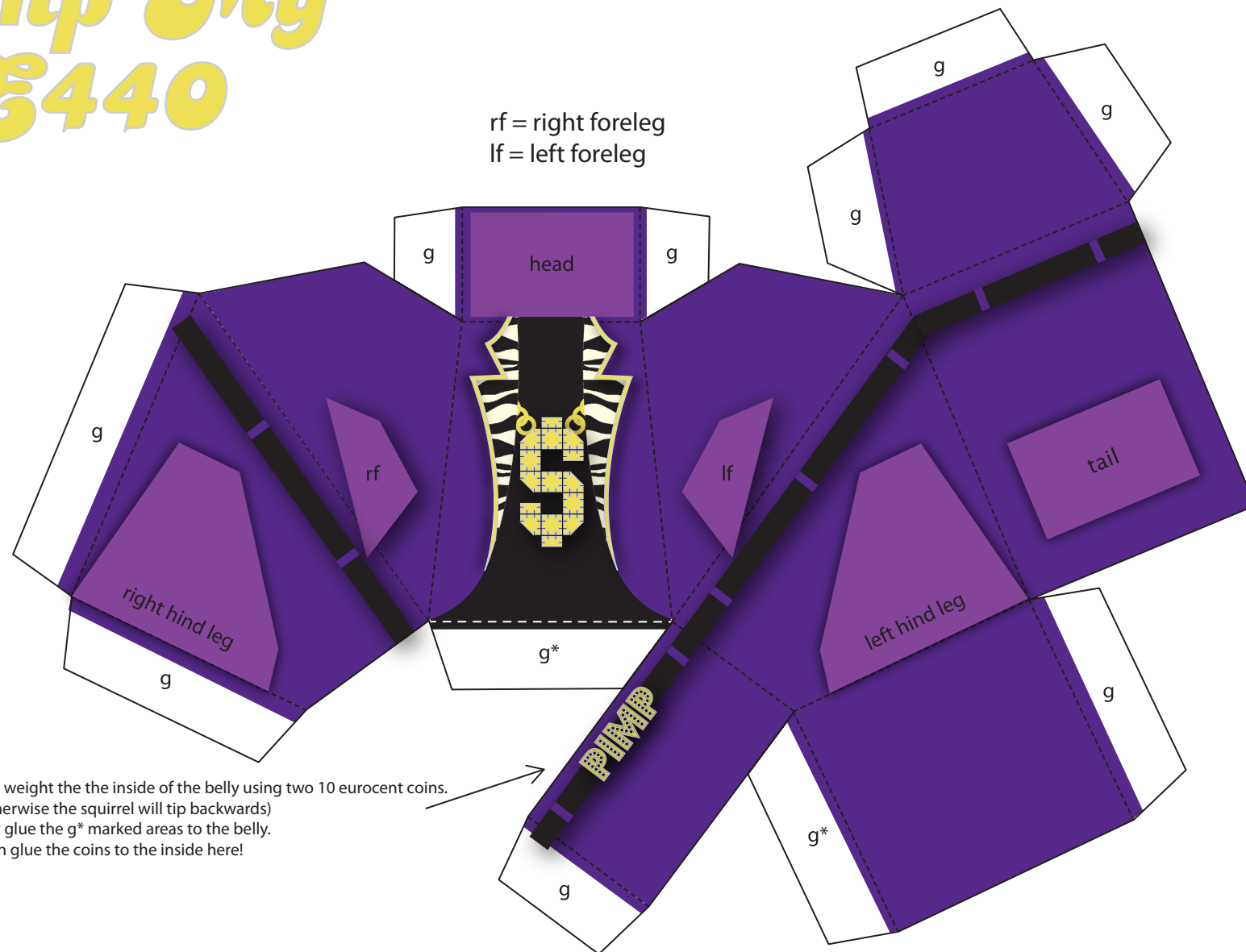
alle400@hotmail.com



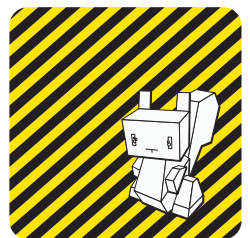
e440©2009

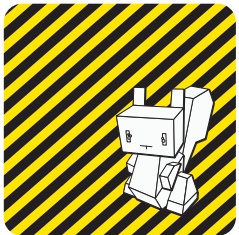
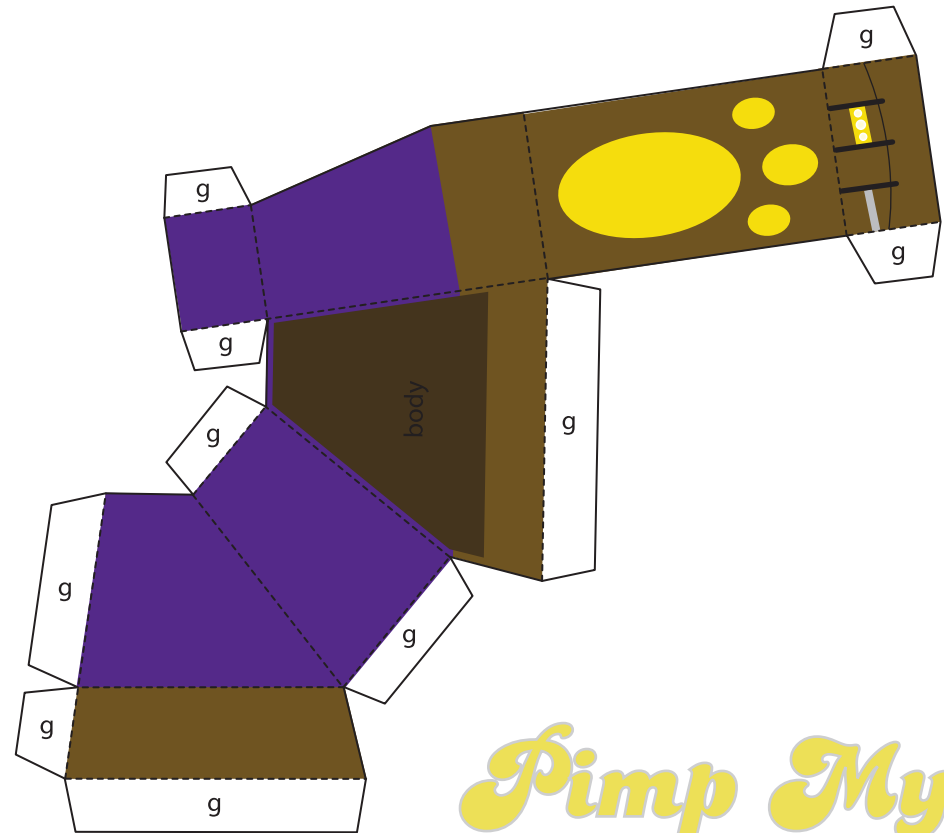
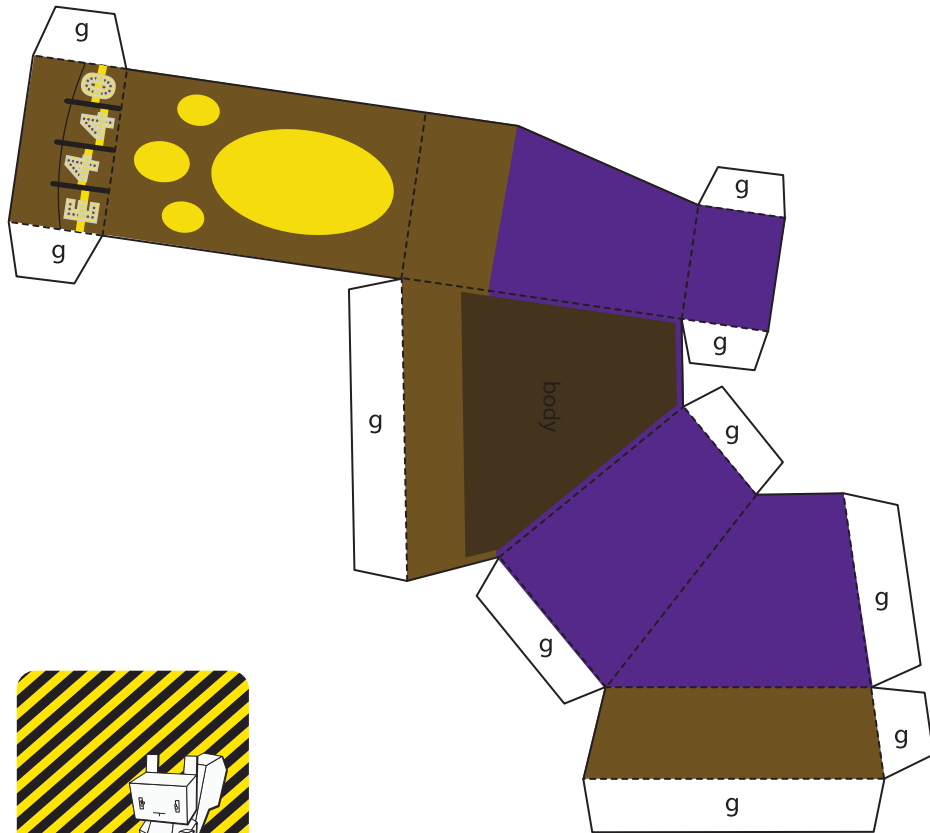
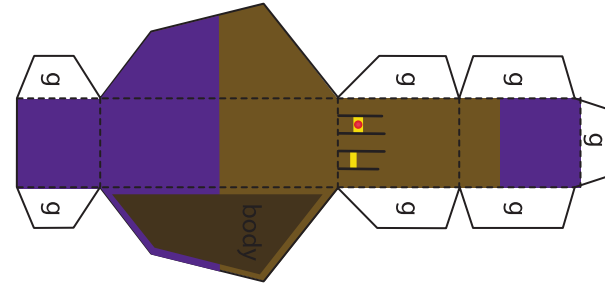
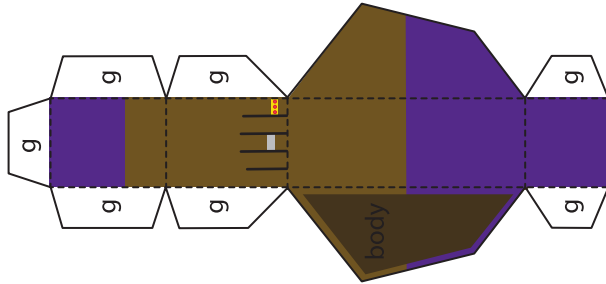
<http://alle440.blog.com> & <http://www.flake.tk>

# Pimp My E440



Add weight the the inside of the belly using two 10 eurocent coins.  
(Otherwise the squirrel will tip backwards)  
First glue the g\* marked areas to the belly.  
Then glue the coins to the inside here!

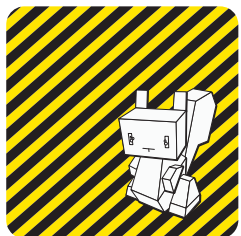
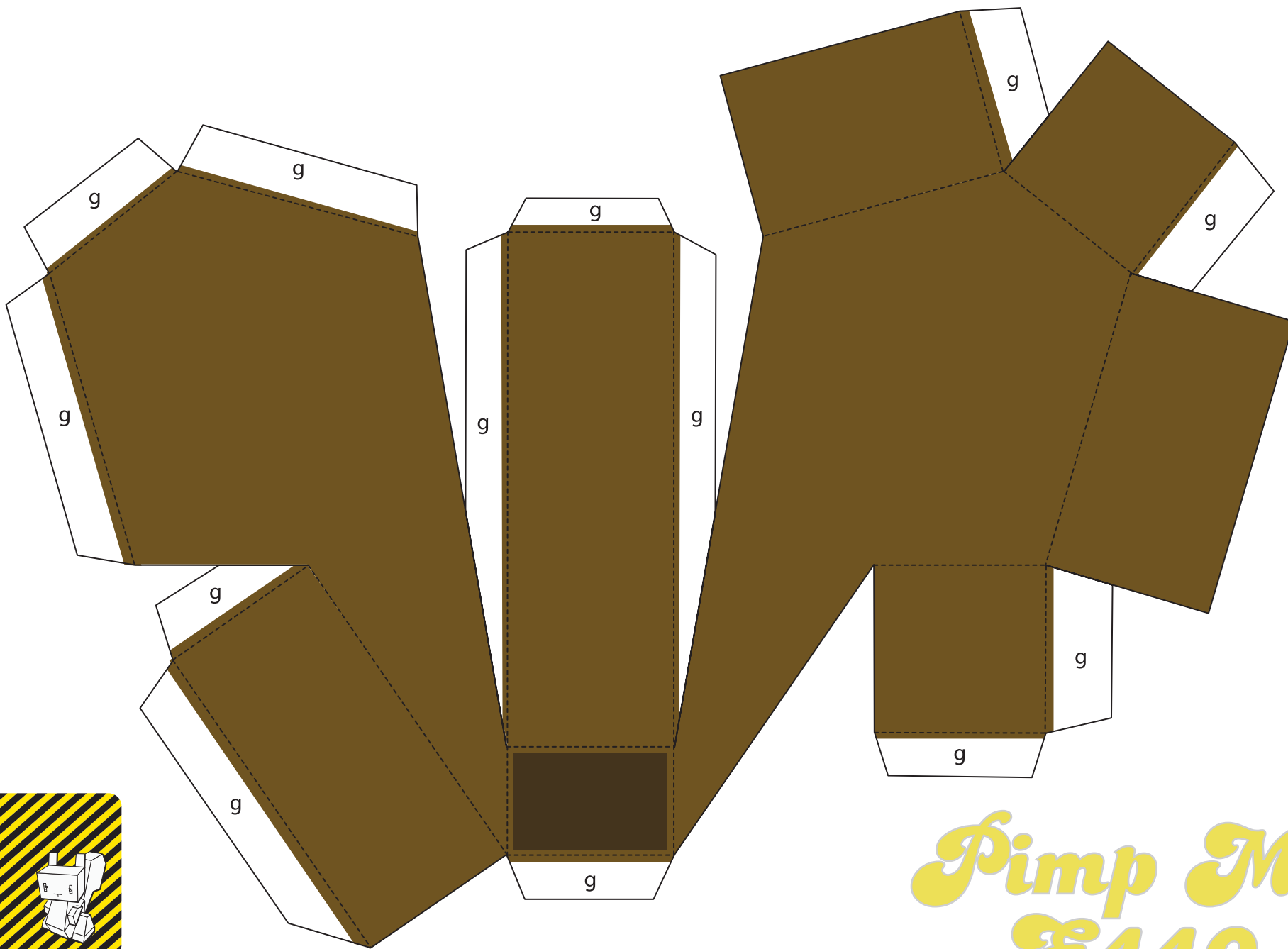




e440©2009

<http://alle440.blog.com/> & <http://www.flake.tk>

*Pimp My*  
**E440**

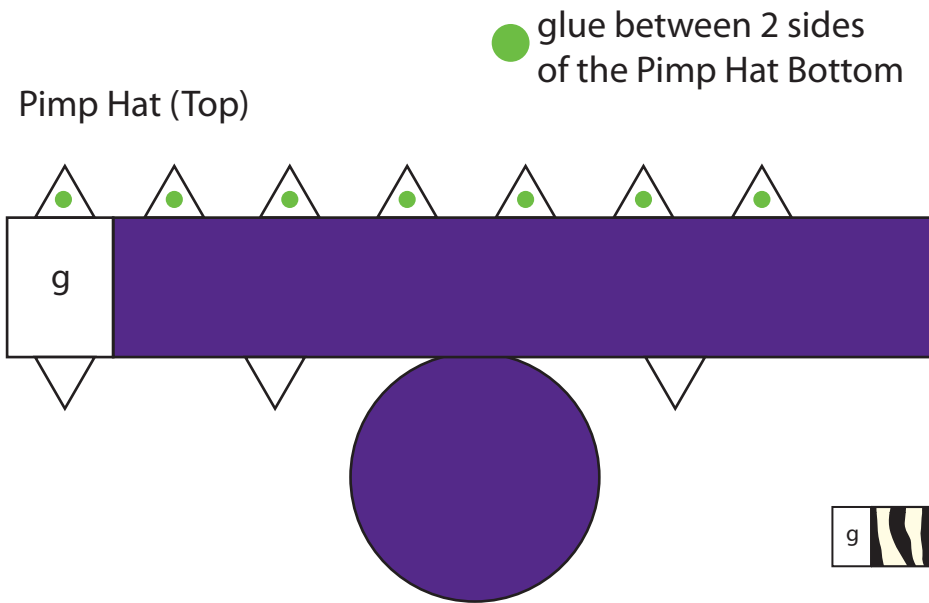


e440©2009

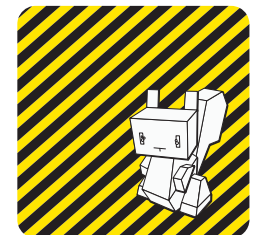
<http://alle440.blog.com/> & <http://www.flake.tk>

*Pimp My  
E440*

# Pimp My E440



Pimp Hat (Top2)



e440©2009