

How to make a Repair card .
Instructions for use.- Aino NOVO-7 ELF-II
ONLY!!

- Preparing the sd-card repair.-

- 1、 Extract the repair card from .rar compressed package. The .img repair card image file authoring tools and a repair card catalog.- Put your SD card into the card reader.-
- 2、 Into the tools directory, run the USB Image Tool.-
- 3、 The following window select your card reader inside the TF card (Figure 2G card)



- 4、 Click the Add button, select the above collection of options:

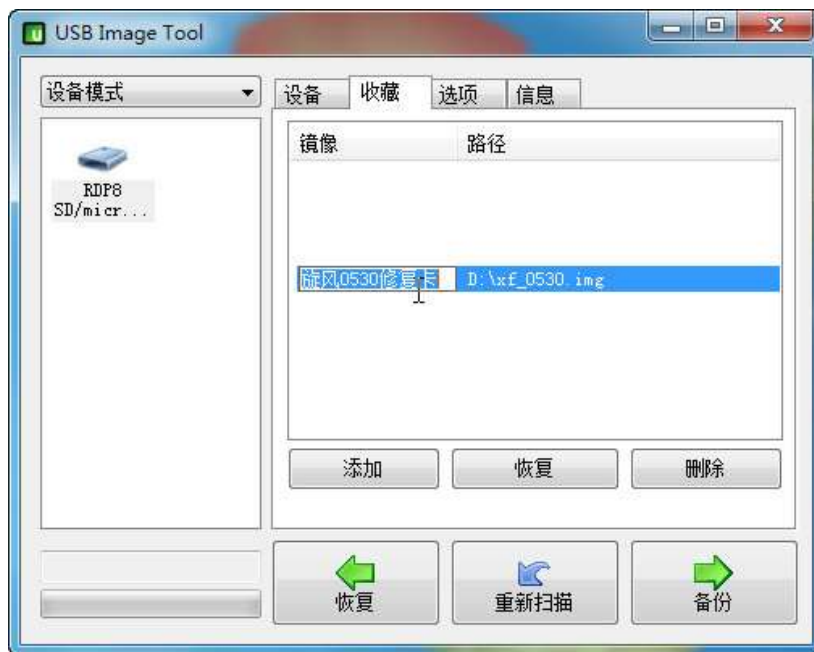


5、 The pop-up window to select the repair card image (elf2_0527.img)



6、 In order to facilitate memory, you can click the name and change it, as shown in:





7、 And then click the Restore button:



8、 There will be prompt, select the Yes button:



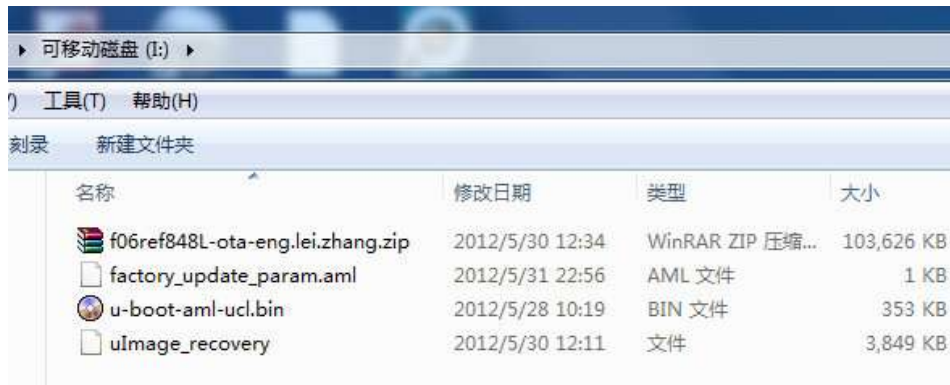
- 9、 The system recovery mirrored the .img into the sd card, the lower left corner you can see the progress bar, it takes about 1/ 2 minutes:



10. SD card status after the completion of the following diagram is a 512M tf card. Tthe card capacity greater than 512M is temporarily unavailable::



11. The following imagen should have a similar document, into the sd card:



12. If you want to install a pre-installed software and presentation media, download patch.zip package and media presentation file directory, extracted to the root directory of the repair card.-

13. The repair card supports xp vista win7 32-bit 64-bit systems, xp.

The system error "Error The application to initialize properly (0xc0000135) failed 0xc0000135 is because the system is missing the redistributable package. NET framework. Please install Microsoft. NET framework components.-

- How to use.-

- 1、 To ensure the shutdown (Please do not plug the charger and data cable) press power button 10 seconds to open the key to force shutdown.
- 2、 Insert the repair card into ths tablet's sd reader.-
- 3、 Press and hold the volume down (-) button and then hold down the power button together for 5 seconds until the machine bright screen display shows the logo. The release the buttoms.-
- 4、 The repair and upgrade the firmware process automatic, when finished will automatically shut down or automatically restart.-

= Recover the sd-card to original size.-

- 1、 Remove the sd card form the tablet, and put it back into the PC's sd card reader
- 2、 Then run Usboot tools (if is win7 system select run with administrator privileges):
- 3、 There will be prompt, select OK:



4、To choose your sd-card:



5、Click to select the operating mode, select Reset 0:



6、Click the Start button::



7、 Upon completion of the system prompt as follows.



8- Unplug the card and re-insert the card into the reader.-

9- format the sd card as FAT 32 and 64 byts.-

Enjoy!!!

Your Ainol Novo-7 ELF –II is alive!!!!