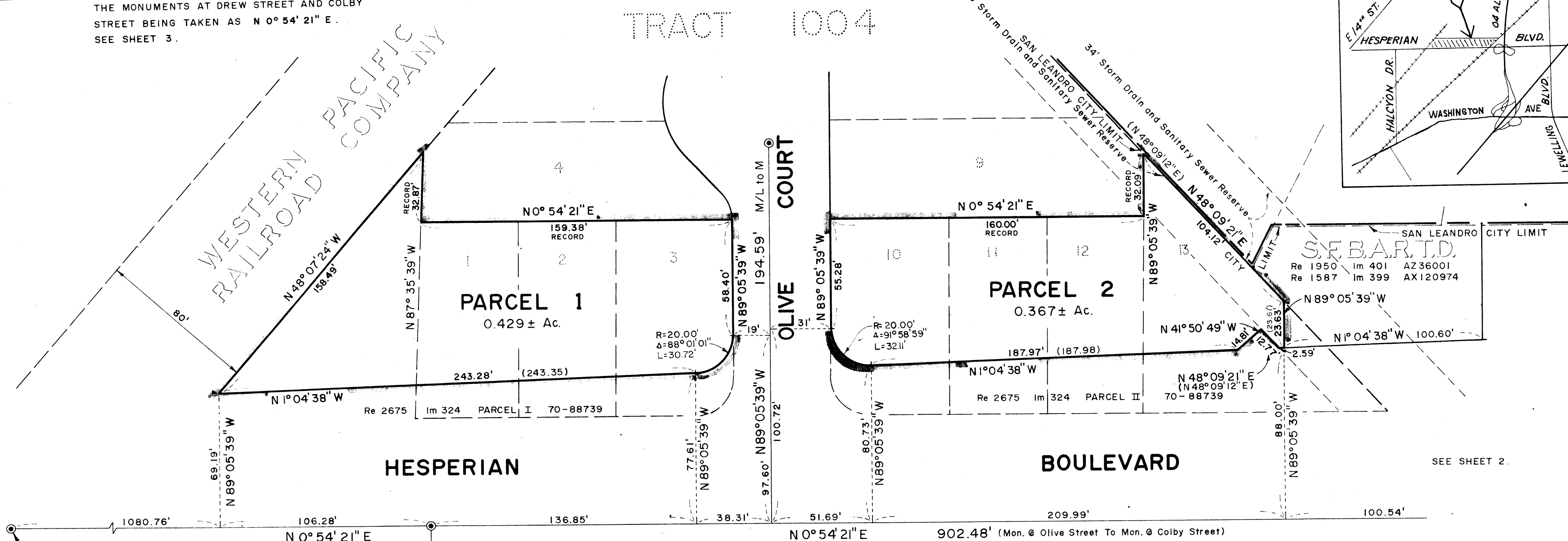
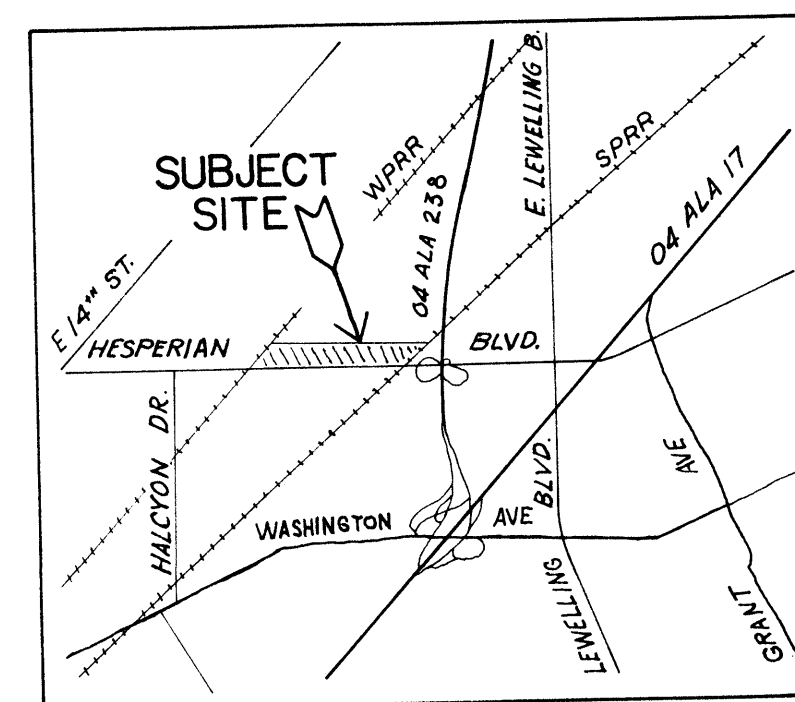


NOTE:  
CONCRETE MONUMENTS USED FOR CONTROL ARE INDICATED THUS: ●  
DEED DISTANCES AND BEARINGS OF Re 2675 Im 324, 70-88739 ARE INDICATED THUS: (243.35)

BASIS OF BEARING: THE LINE OF HESPERIAN BOULEVARD BETWEEN THE MONUMENTS AT DREW STREET AND COLBY STREET BEING TAKEN AS N 0° 54' 21" E. SEE SHEET 3.



CITY CLERK'S CERTIFICATE

THIS MAP WAS PRESENTED TO THE CITY COUNCIL OF THE CITY OF SAN LEANDRO AND WAS APPROVED ON THE 4th DAY OF November, 1974.

*Richard H. Ward*  
CITY CLERK OF THE  
CITY OF SAN LEANDRO

SURVEYOR'S CERTIFICATE

THIS MAP WAS PREPARED BY ME OR UNDER MY DIRECTION AND IS BASED UPON A FIELD SURVEY IN CONFORMANCE WITH THE REQUIREMENTS OF THE SUBDIVISION MAP ACT AT THE REQUEST OF THE COUNTY OF ALAMEDA ON AUGUST, 1973.  
I HEREBY CERTIFY THAT ALL PROVISIONS OF APPLICABLE STATE LAW AND LOCAL ORDINANCES HAVE BEEN COMPLIED WITH.

*Reuben B. Hurd*  
REUBEN B. HURD  
SUPERVISING CIVIL ENGINEER  
R.C.E. No. 11608

CITY ENGINEER'S CERTIFICATE

THIS MAP HAS BEEN EXAMINED THIS 22nd DAY OF November, 1974, FOR CONFORMANCE WITH THE REQUIREMENTS OF SECTION 11575 OF THE SUBDIVISION MAP ACT.

*R. H. Ward*  
RICHARD H. WARD  
PUBLIC WORKS DIRECTOR  
R.C.E. No. 8375

RECORDER'S CERTIFICATE

FILED THIS 25th DAY OF NOVEMBER, 1974, AT 10:45 A.M. IN BOOK 84 OF PARCEL MAPS AT PAGES 77, 78, 79, AND 80, AT THE REQUEST OF RICHARD H. WARD.

JACK G. BLUE  
COUNTY RECORDER

BY *John J. Emica*  
DEPUTY COUNTY RECORDER

★ USE WITH CAUTION ★  
THIS IS A PUBLIC WORKS DEPARTMENT  
WORKING COPY OF AN OFFICIAL MAP  
ON FILE IN THE OFFICE OF THE COUNTY  
RECORDER, COUNTY OF ALAMEDA. OF-  
FICE INFORMATION OR CALCULATIONS  
MAY HAVE BEEN ADDED HEREON.

230 970  
PARCEL MAP 1393

CITY OF SAN LEANDRO  
COUNTY OF ALAMEDA, CALIFORNIA

OWNER: COUNTY OF ALAMEDA  
RE 3782 IM 728, 74-125284 RE 3782 IM 726, 74-125283  
RE 3782 IM 724, 74-125282 RE 3592 IM 772, 74-6728  
RE 3782 IM 722, 74-125281

BY THE  
COUNTY OF ALAMEDA PUBLIC WORKS AGENCY

SCALE: 1" = 40' OCTOBER 1974 SHEET 1 OF 4 SHEETS

11-N-D-13.

Map Btc 84 Pp 77-80 FILED 11-25-74 84/77-80