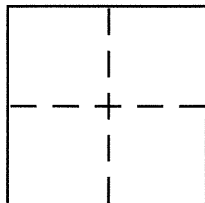


**CORNER RECORD**Document Number CR 6845City of San LeandroCounty of Alameda, CaliforniaBrief Legal Description Lot 47, Tract No. 1234, 33-M-86**CORNER TYPE**

Government Corner ☐ Control ☐  
 Meander ☐ Property ☒  
 Rancho ☐ Other ☐  
 Date of Survey 11-21-14

**COORDINATES (Optional)**

N. \_\_\_\_\_  
 E. \_\_\_\_\_  
 Zone \_\_\_\_\_ NAD27 ☐ NAD83 ☐  
 NAD83 Epoch \_\_\_\_\_  
 Elev. \_\_\_\_\_  
 Vert. Datum: NGVD29 ☐ NAVD88 ☐  
 Meas. Units: Metric ☐ Imperial ☐

Corner - Left as found ☒ Found and tagged ☐ Established ☐ Reestablished ☒ Rebuilt ☐

Identification and type of corner found: Evidence used to identify or procedure used to establish or reestablish the corner:

Found Monuments as shown. See Page 2 of 2

A description of the physical condition of the monument as found and as set or reset:

Set Monuments as shown. See Page 2 of 2

**SURVEYOR'S STATEMENT**

This Corner Record was prepared by me or under my direction in conformance with the Land Surveyor's Act on FEB 19 2015

Signed Gregory F. Braze P.L.S. or R.C.E. No. 7623

**COUNTY SURVEYOR'S STATEMENT**

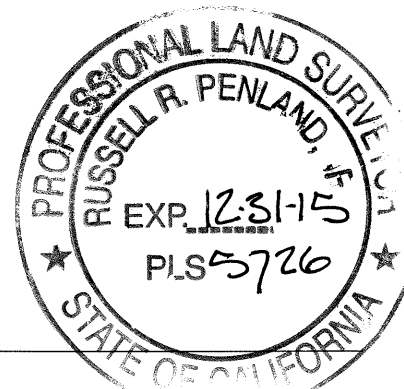
This Corner Record was received 12-11-14

and examined and filed 3-3-15

Signed Russell R. Penland P.L.S. or R.C.E. No. 5726

Title COUNTY SURVEYOR

County Surveyor's Comment \_\_\_\_\_



# LEGEND

FOUND CONCRETE MONUMENT  
PER TR. NO. 1234, 33 M 86-87

SET 3/4" IRON PIPE W/PLASTIC  
PLUG, "LS 7623"

SET NAIL WITH BRASS TAG  
"LS 7623"

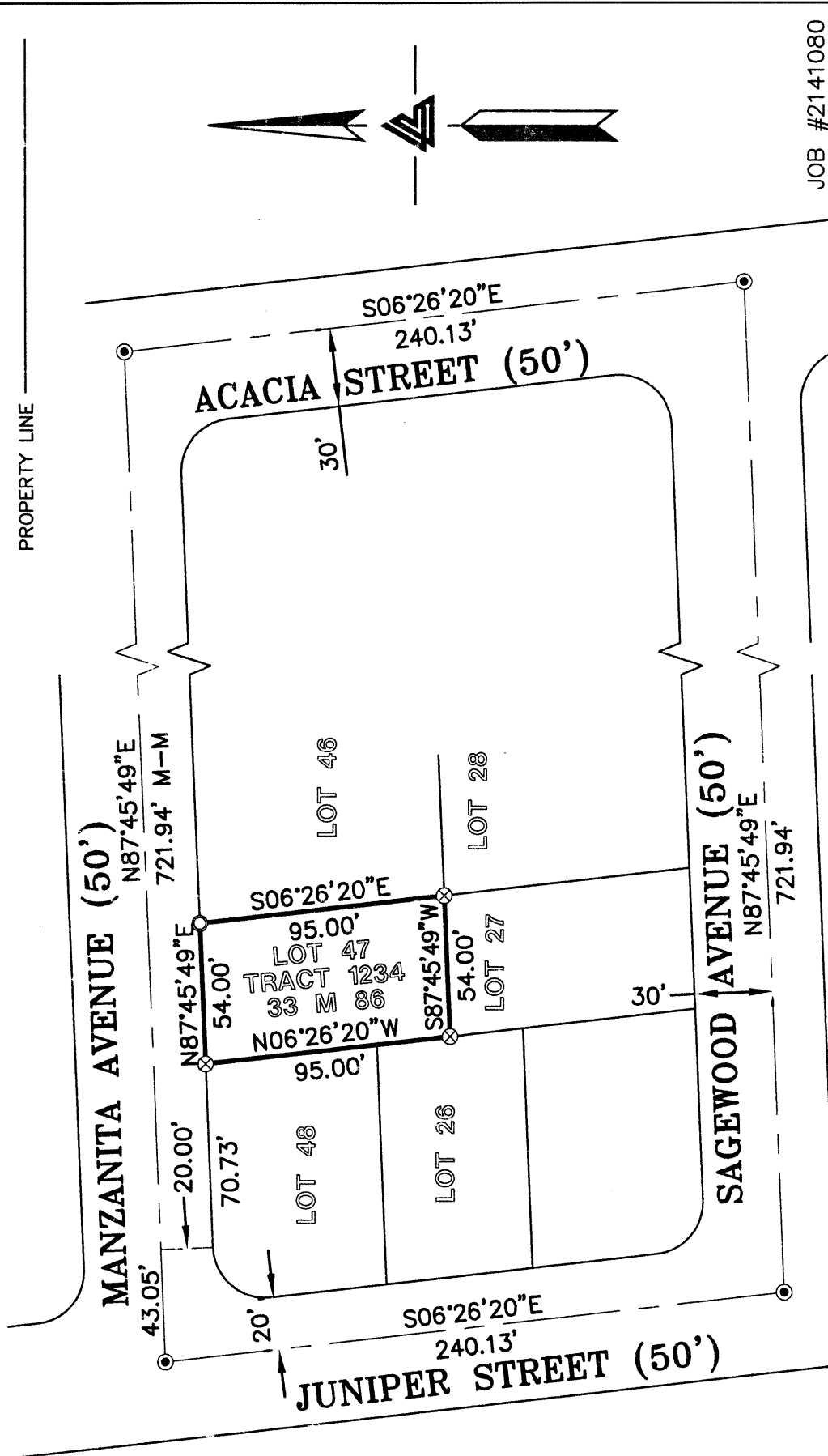
BOUNDARY LINE

MONUMENT LINE

PROPERTY LINE



SCALE: 1" = 60'



JOB #2141080