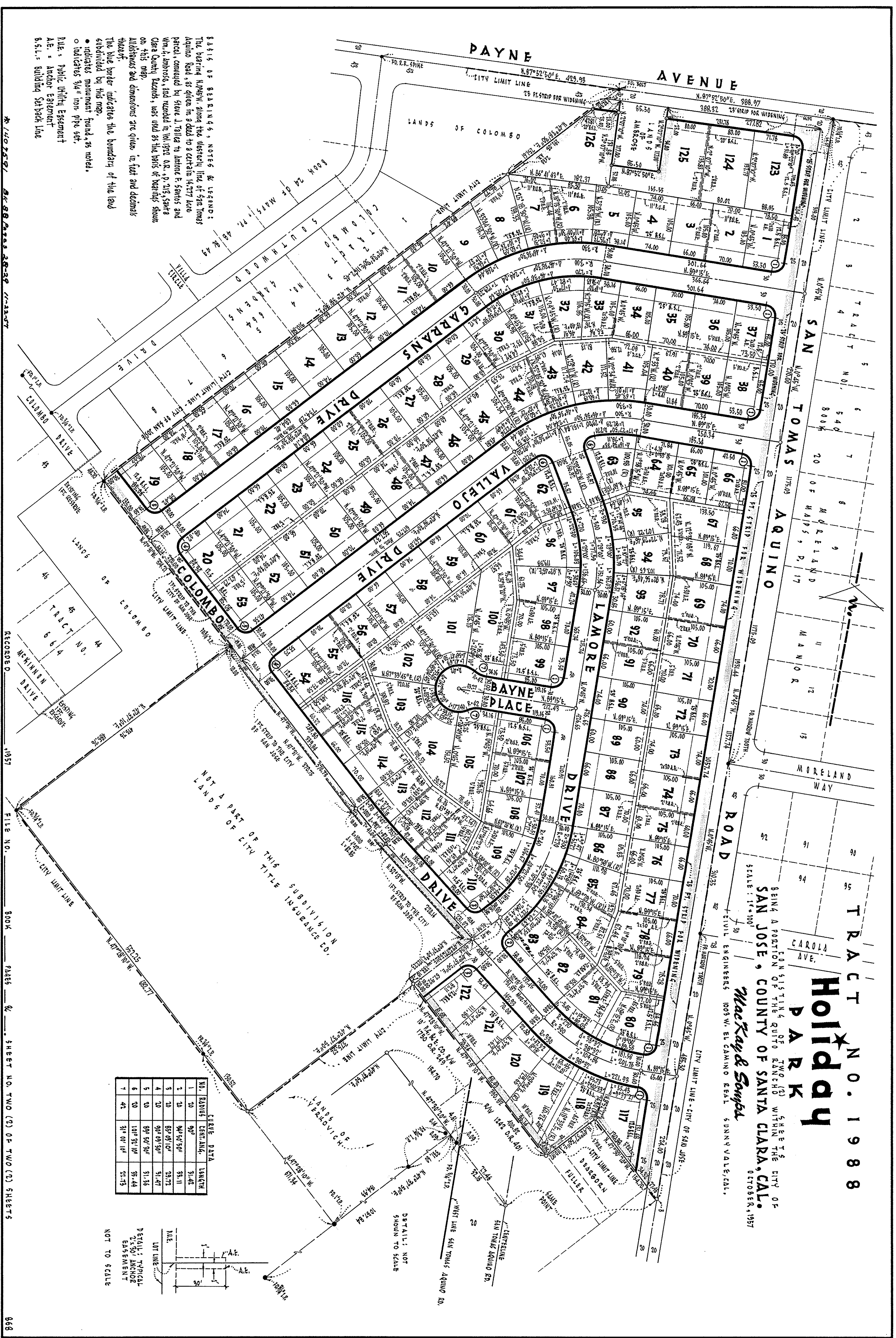


29



**LEGEND:**  
The bearing N. 45° W. along the western line of San Tomas Aquino Road, as given in a deed to a certain 14.177 Acre parcel, conveyed by Steve J. Talley to John E. Smith and Wm. A. Ambrose, and recorded in Vol. 1922 O.R., p. 213, Santa Clara County Records, was used as the basis of bearings shown on this map.  
Distances and dimensions are given in feet and decimals thereof.  
The blue border indicates the boundary of the land subdivided by this map.  
• indicates monument found as noted.  
○ indicates 9/4" iron pipe set.  
P.E. = Public Utility Easement  
A.E. = Anchor Easement  
S.S.L. = Building Set back Line

TRACT NO. 1988  
**Holiday Park**  
BEING A PORTION OF THE QUITO RANCHO OF SANTA CLARA, CAL.  
WITHIN THE CITY OF SAN JOSE, COUNTY OF SANTA CLARA, CAL.  
SCALE: 1" = 100'  
CIVIL ENGINEERS 1003 W. EL CAMINO REAL, SUNNYVALE, CAL.  
*MacKay & Sampa*

NO.	RADIUS	CURVE DATA	LENGTH
1	70	90°	31.42
2	25	84° 56' 50"	33.11
3	25	89° 09' 10"	29.72
4	25	90° 09' 30"	31.47
5	25	89° 50' 30"	31.36
6	25	100° 32' 10"	35.44
7	42	91° 07' 18"	51.73

