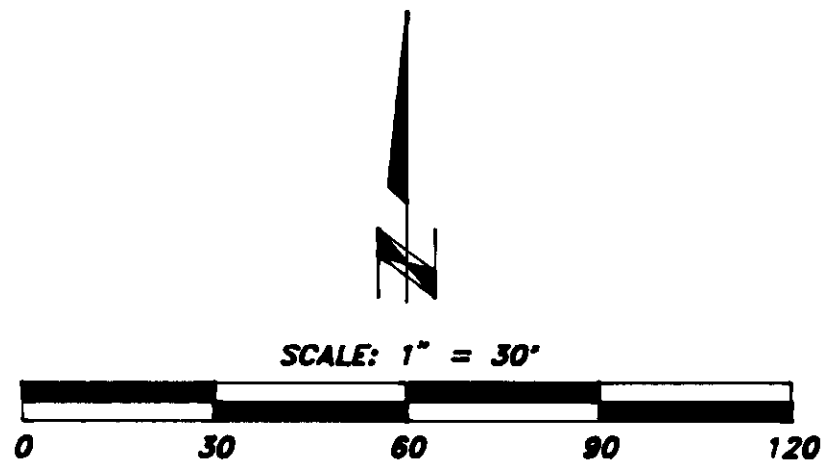


RECORD OF SURVEY

NO. 35 - 13

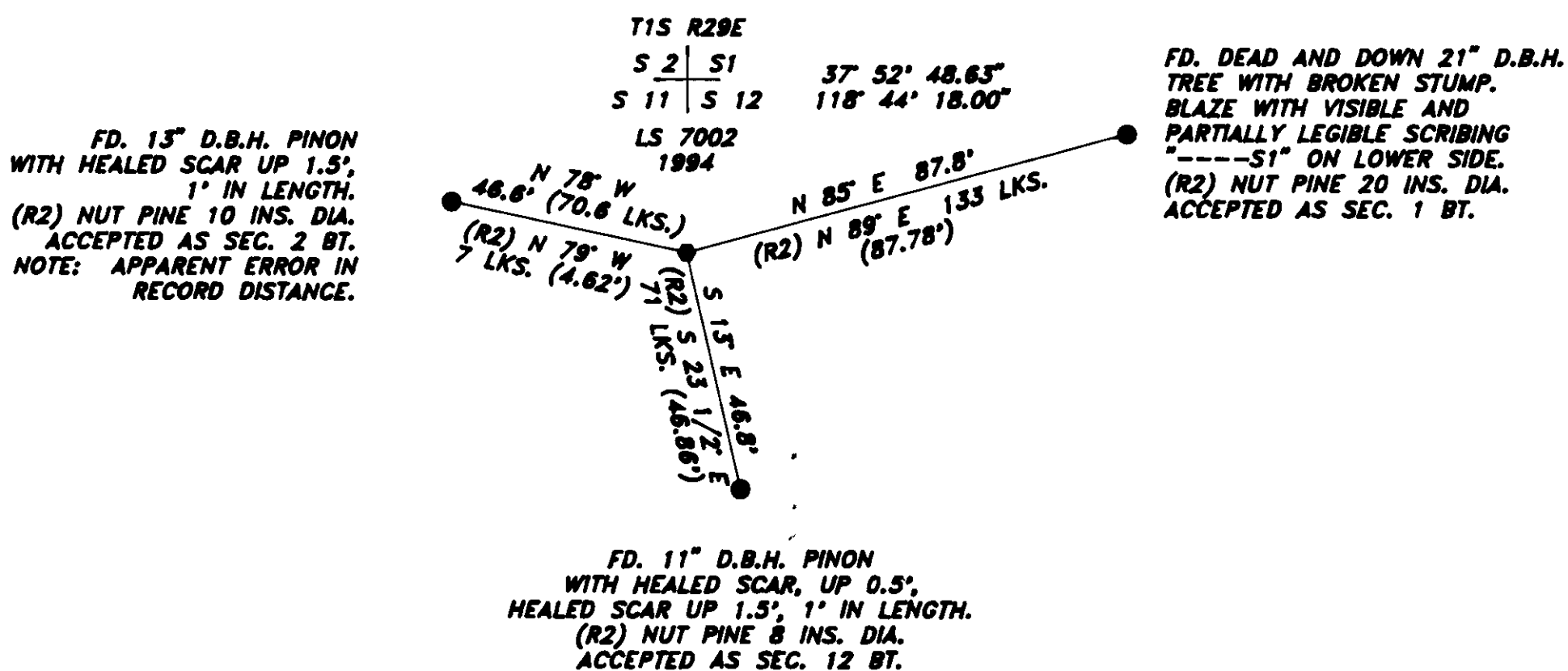
LEGEND

- (R1) U.S. GENERAL LAND OFFICE NOTES, A. W. VON SCHMIDT, 1855.
- (R2) U.S. GENERAL LAND OFFICE NOTES, S. A. HANSON, 1879.
- (R3) U.S. GENERAL LAND OFFICE NOTES, G. F. SAWYER, 1923.
- SET, 30" x 2.5" DIA. ALUMINUM POST WITH 3.25" ALUMINUM CAP, STAMPED "U.S. DEPT. OF AGRICULTURE FOREST SERVICE," AND MARKED AS SHOWN.
- FD. 1923 U. S. GENERAL LAND OFFICE MONUMENT, AS NOTED.
- ◆ FD. CALIFORNIA DIVISION OF HIGHWAYS BRASS CAP, BRAZED TO 2.5" O.D.G.I.P., MARKED AS NOTED.
- ▲ FD. BASIC HORIZONTAL CONTROL MONUMENT, AS NOTED.
- FD. OTHER EVIDENCE, AS NOTED.
- CALCULATED POSITION, NOTHING SET.
- FD. BEARING TREES, AS NOTED.



DETAIL "E"

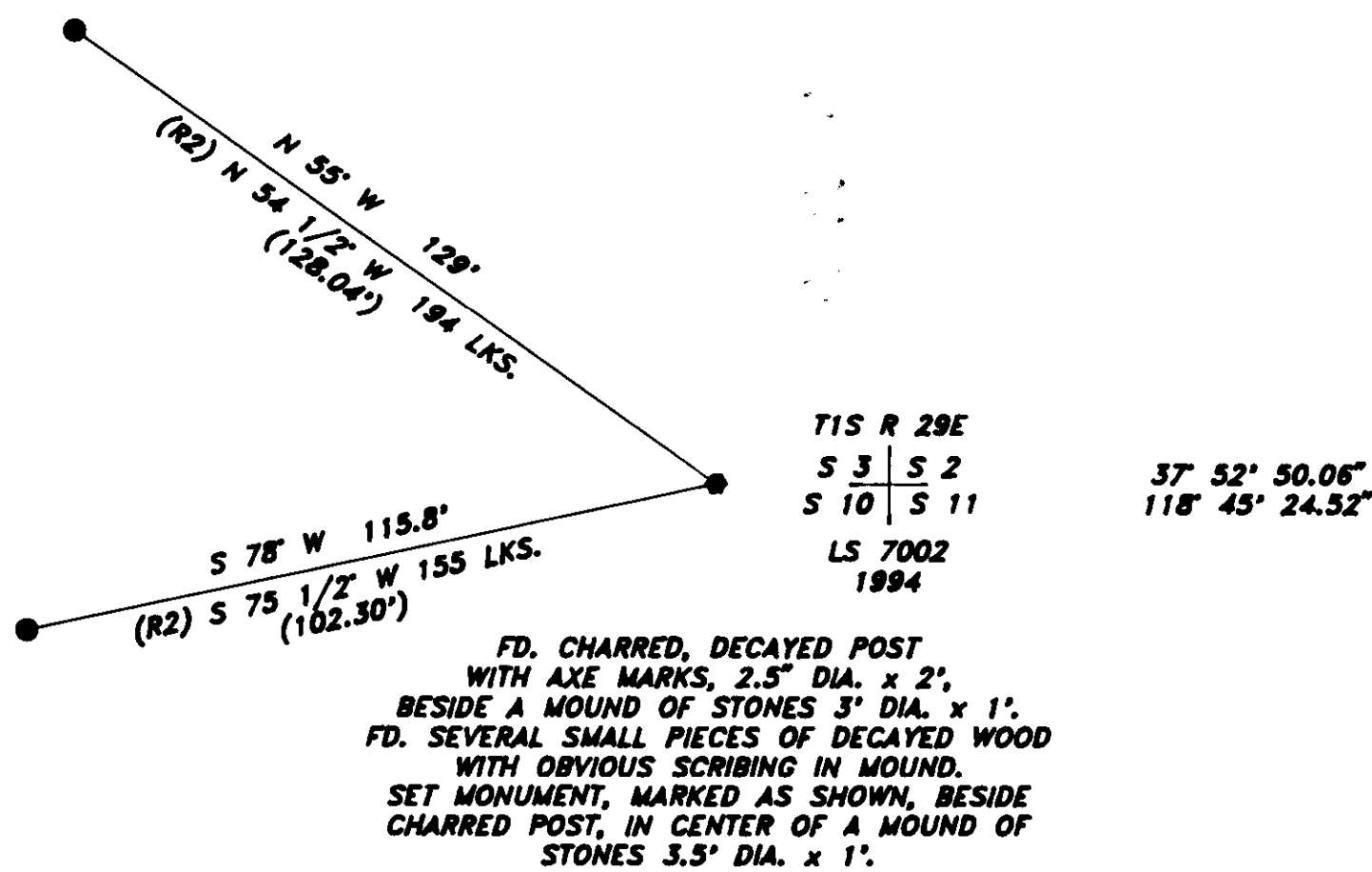
FD. NO EVIDENCE OF ORIGINAL MONUMENT. CORNER POSITION DETERMINED BY BEST FIT OF RECORD DISTANCES TO FD. BT'S. AT TRUE POINT I SET A MAGNET, DOWN 2', OVER WHICH I SET A MONUMENT, MARKED AS SHOWN, IN A MOUND OF STONES, 3.5' DIA. x 1'.



DETAIL "F"

FD. 24" D.B.H. DEAD AND DOWN PINON WITH BLAZE SCRIBED "T1S RXXIX E SIII" UP 4'. MEASUREMENT TO APPROXIMATE CENTER OF ROOT. (R2) PINE 24 INS. DIA. ACCEPTED AS SEC. 3 BT.

FD. 15" D.B.H. PINON WITH HEALED SCAR, UP 6". 1950 U.S.F.S. "K" TAG. (R2) PINE 16 INS. DIA. ACCEPTED AS SEC. 10 BT.



DETAIL "G"

FD. DECAYED WOODEN POST, 5" DIA. x 2.3' SCRIBED "XVIII SVII XXIX SXII" BESIDE A MOUND OF STONES 2' DIA., FLUSH, WITH A DEPRESSION IN ITS CENTER. ACCEPTED AS ORIGINAL MONUMENT. SET MONUMENT, MARKED AS SHOWN, BESIDE DECAYED POST IN A MOUND OF STONES 3' DIA. x 1.5'. POINT FALLS ON S'ly SIDEHILL ABOVE TAYLOR CANYON RD. AT THE END OF A N - S FENCELINE.

