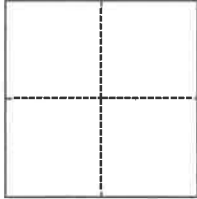


CORNER RECORD

Agency Index

BK 150 PG 95

Document Number CR 16387

City of SAN LEANDRO County of ALAMEDA, CaliforniaBrief Legal Description MONUMENT AT INTERSECTION OF 165TH AVENUE & LOS BANOS STREET**CORNER TYPE****COORDINATES (Optional)**

- ☐ Government Corner ☒ Control
☐ Meander ☐ Property
☐ Rancho ☐ Other

Date of Survey December 6, 2022

N. _____ E. _____

Elevation _____

Units ☐ Metric ☒ U.S. Survey Foot

Horizontal Datum _____

Zone _____ Epoch Date _____

Vertical Datum _____

☐ Complies with Public Resources Code §§8801-8819☐ Complies with Public Resources Code §§8890-8902

PLS Act Ref.:

☐ 8765(d)☒ 8771☐ 8773☐ Other:Corner/
Monument:☒ Left as found☐ Established☐ Rebuilt☒ Pre-Construction☐ Found and tagged☐ Reestablished☒ Referenced☐ Post-Construction

Narrative of corner identified and monument as found, set, reset, replaced, or removed:

☒ See sheet #2 for description(s):**SURVEYOR'S STATEMENT**

This Corner Record was prepared by me or under my direction in conformance with

the Professional Land Surveyors' Act on December 21, 2022

Signed

P.L.S. or R.C.E. No.

5254**COUNTY SURVEYOR'S STATEMENT**

This Corner Record was received _____

and examined and filed 1-19-2023

Signed

P.L.S. or R.C.E. No.

7010Title ALAMEDA COUNTY SURVEYOR

County Surveyor's Comment



LEGEND

STREET ADDRESS

APN ASSESSOR'S PARCEL NUMBER

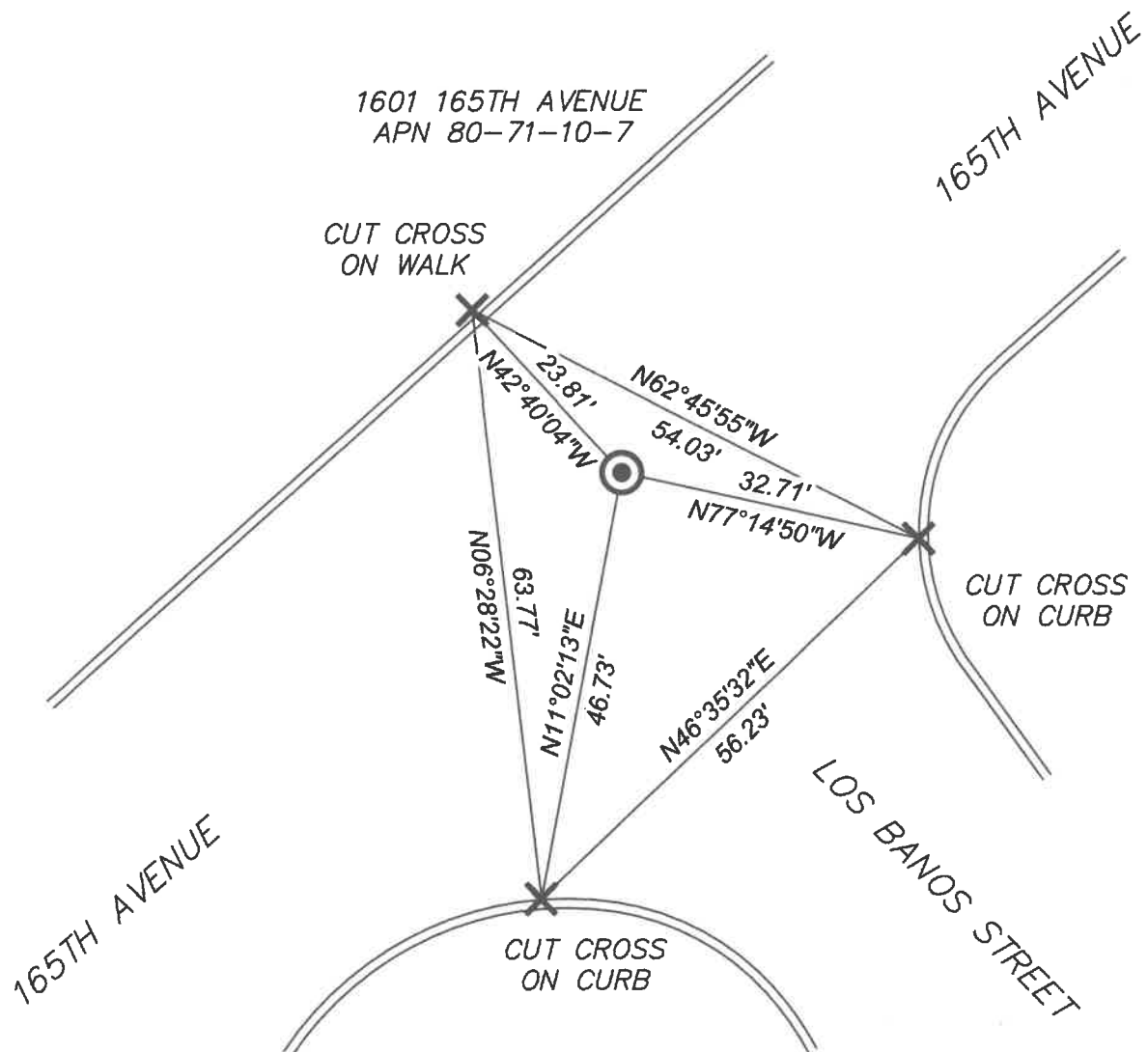


FOUND SURVEY MONUMENT (1/8" PIN IN
2.5" BRASS DISC IN CONCRETE 12" BELOW
GRADE IN WELL)



CUT CROSS SET AS DISPLAYED

SCALE: 1" = 20'



22-339 SHEET C-87A